

## SPECIFICATIONS

- 1. GENERAL**
  - 1.1 Transmitting frequency 15 kHz to 200 kHz, Free-synthesize
  - 1.2 Output power 1, 2 or 3 kWrms
  - 1.3 Transmitting rate 10 to 2700 pulse/min (5 to 3000 mm range, normal mode)
  - 1.4 Transmitting mode TruEcho CHIRP™, Standard mode, CW mode
  - 1.5 Pulselength 0.05 to 5 ms
  - 1.6 External monitor (required specifications)
 

Display resolution	Landscape XGA (1024x768), Landscape SXGA (1280x1024), Portrait SXGA (1024x1280)
--------------------	---
- 2. PROCESSOR UNIT**
  - 2.1 Color indication
 

Echo color	8, 16 or 64 colors according to echo intensity
Background color	Select from 5 colors
  - 2.2 Hue 7 steps (standard, Hue 1 to 5, customized)
  - 2.3 Echo display mode Single mode (high/low frequency), Dual-frequency, Zoom, User 1/2  
User 1/2 available to use mixture, multi-gain, telesounder and external sounder display
  - 2.4 Zoom display Bottom-lock expansion, Bottom zoom, Marker zoom, Discrimination zoom
  - 2.5 Depth range 5 to 3000 m
  - 2.6 Range shift 2000 m max.
  - 2.7 Expansion range 5 to 200 m
  - 2.8 Fish size histogram (FCV-1900G only) 2 m depth or more, specified transducer required
  - 2.9 Display advance speed 6 steps (Lines/TX: Freeze, 1/4, 1/2, 1/1, 2/1, 4/1)
  - 2.10 Data recording Echo display and measured data can be recorded to internal memory
  - 2.11 Language Chinese, Danish, English, French, Japanese, Korean, Russian, Spanish, Norwegian
- 3. INTERFACE**
  - 3.1 Number of port
 

NMEA	3 ports, NMEA V1.5/2.0/3.0
LAN	1 port, Ethernet 100Base-TX (HUB required)
CIF	1 port
Net sonde	1 port, (sonde marker/ sonde KP)
Video signal	1 port, HDMI type-D
External KP	1 port
Temperature sensor	1 port
USB	1 port, USB2.0 (specified monitor brilliance control available)
  - 3.2 Data sentences
 

Input	GGA, GLL, GNS, MTW, VHW, VTG
Output	DBS, DBT, DPT, MTW, TLL
  - 3.3 Output proprietary sentences
 

PFEC	afI, bcd, dat, mrk
------	--------------------
- 4. POWER SUPPLY**
  - 4.1 Processor unit 12-24 VDC: 8.3-3.9 A
  - Rectifier (RU-1746B-2, option) 100/110/115/220/230 VAC, 1 phase, 50/60 Hz
  - AC/DC power supply unit 100-115/200-230 VAC, 1 phase, 50-60 Hz (PR-240, option)
- 5. ENVIRONMENTAL CONDITIONS**
  - 5.1 Ambient temperature -15°C to +55°C
  - 5.2 Relative humidity 95% or less at +40°C
  - 5.3 Degree of protection IP22
  - 5.4 Vibration IEC 60945 Ed.4

## EQUIPMENT LIST

- Standard**
1. Processor Unit (FCV-1901) ..... x1
  2. Control Unit (FCV-1902) ..... x1
  3. Spare parts, Installation materials

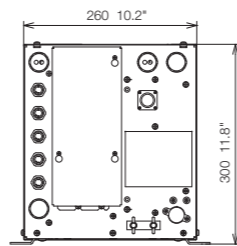
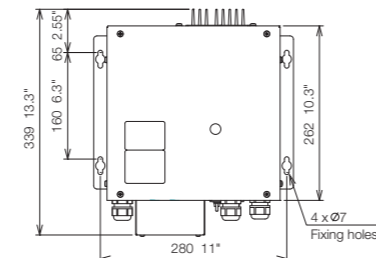
**Option**  
 Transducer, Thru-hull pipe, Interface Unit (FCV-1903), Ethernet HUB, Junction box, Booster box, Temperature sensor, AC/DC power supply unit, Rectifier, Installation material, Cable assembly, Cable (for transducer extension), HDMI-M Cable

Beware of similar products

All brand and product names are registered trademarks, trademarks or service marks of their respective holders.

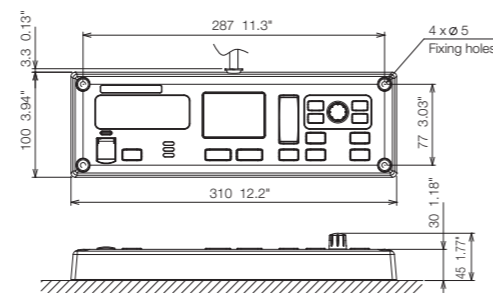
## Processor Unit

FCV-1901  
10.2 kg 22.5 lb

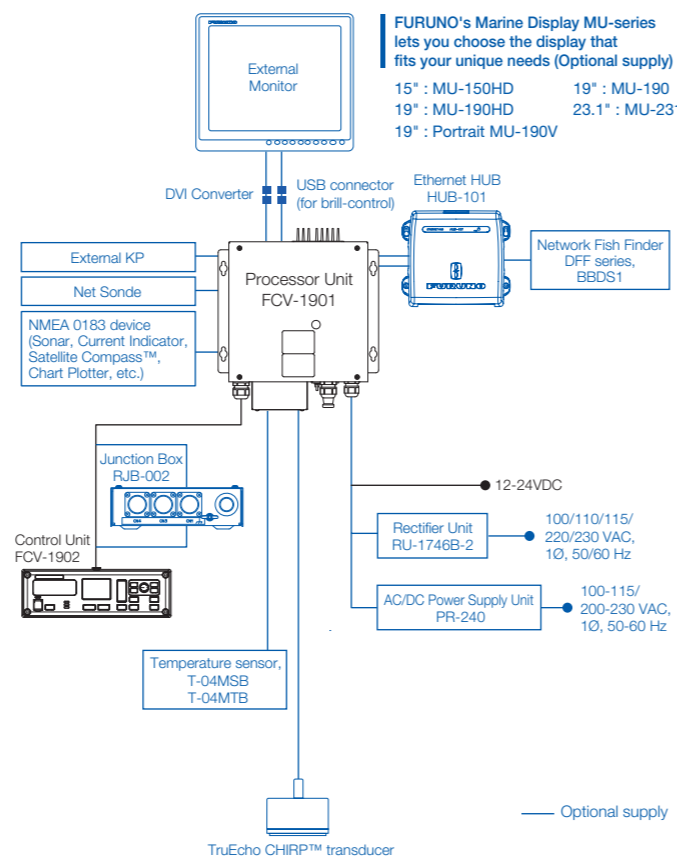


## Control Unit

FCV-1902  
1.1 kg 2.4 lb



## Interconnection Diagram



# FURUNO

## TruEcho CHIRP WITH UNIQUE FISH SIZE INDICATOR

Model **FCV-1900G**

High precision fish size graph  
for *efficient and sustainable fishing*

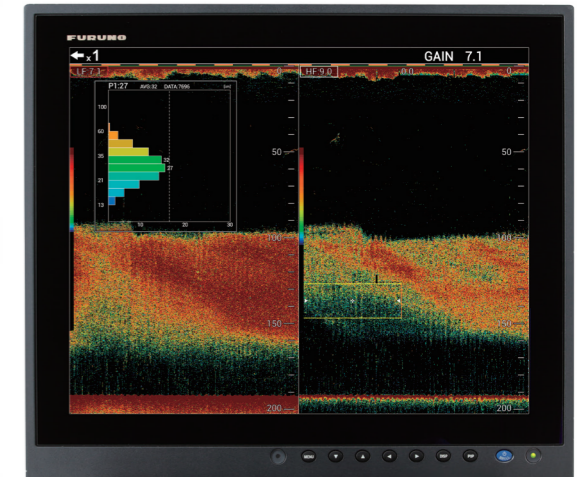


Photo: 19" Marine Display MU-190HD (Customer Supply)

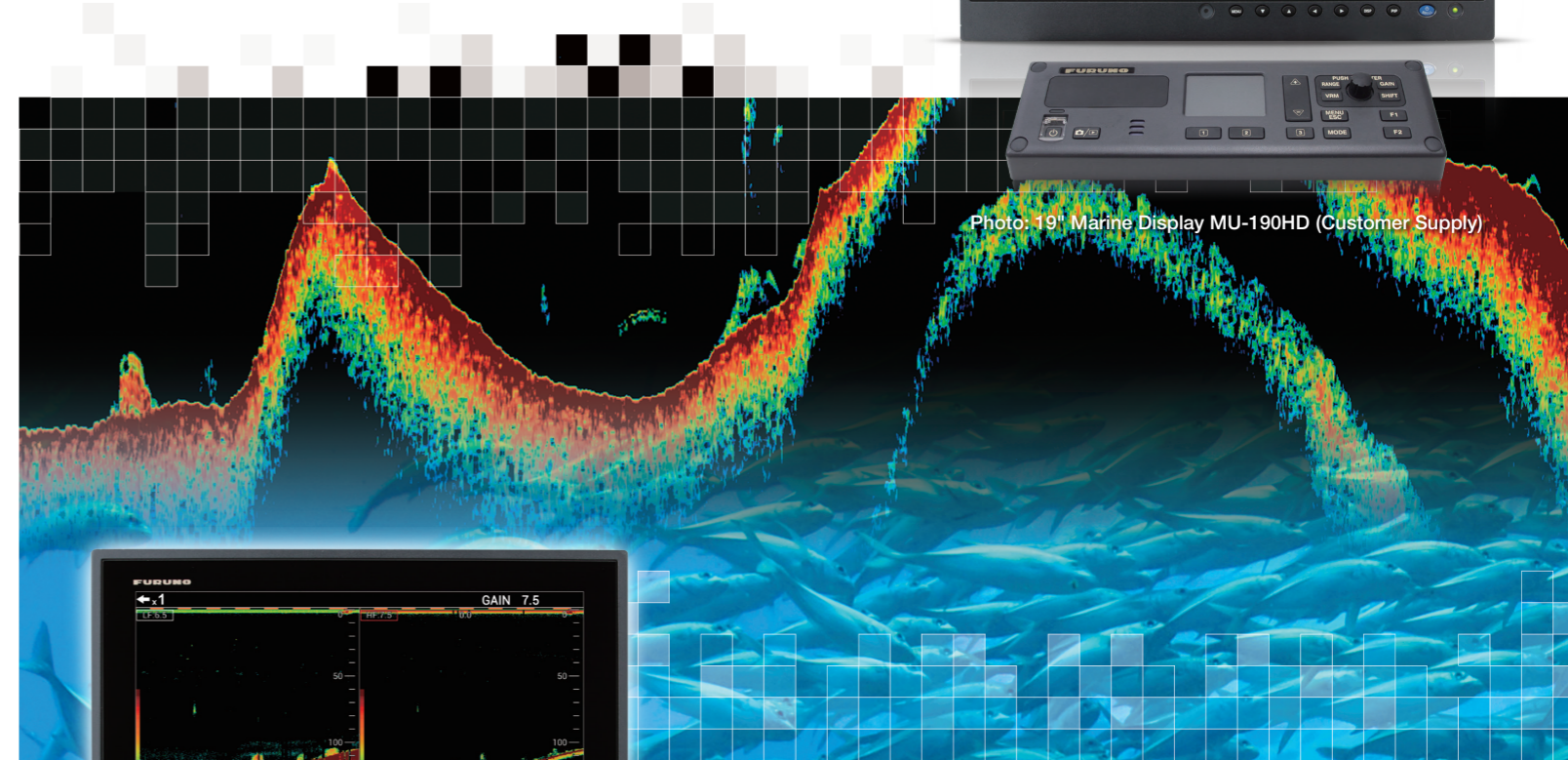


Photo: 19" Marine Display MU-190HD (Customer Supply)

Model **FCV-1900B**

High resolution echoes  
from shallow to deep waters

SPECIFICATIONS SUBJECT TO CHANGE WITHOUT NOTICE

**FURUNO ELECTRIC CO., LTD.**  
Nishinomiya, Hyogo, Japan  
www.furuno.com

**FURUNO U.S.A., INC.**  
Camas, Washington, U.S.A.  
www.furunousa.com

**FURUNO (UK) LIMITED**  
Havant, Hampshire, U.K.  
www.furuno.co.uk

**FURUNO FRANCE S.A.S.**  
Bordeaux-Mérignac, France  
www.furuno.fr

**FURUNO ITALIA S.R.L.**  
Gatteo Mare, Italy  
www.furuno.it

**FURUNO ESPAÑA S.A.**  
Madrid, Spain  
www.furuno.es

**FURUNO DANMARK A/S**  
Hvidovre, Denmark  
www.furuno.dk

**FURUNO NORGE A/S**  
Ålesund, Norway  
www.furuno.no

**FURUNO SVERIGE AB**  
Västra Frölunda, Sweden  
www.furuno.se

**FURUNO FINLAND OY**  
Espoo, Finland  
www.furuno.fi

**FURUNO POLSKA Sp. Z o.o.**  
Gdynia, Poland  
www.furuno.pl

**FURUNO EURUS LLC**  
St. Petersburg, Russian Federation  
www.furuno.com.ru

**FURUNO SINGAPORE**  
Singapore  
www.furuno.sg

**FURUNO DEUTSCHLAND GmbH**  
Rellingen, Germany  
www.furuno.de

**FURUNO HELLAS S.A.**  
Piraeus, Greece  
www.furuno.gr

**FURUNO (CYPRUS) LTD**  
Limassol, Cyprus  
www.furuno.com.cy

**FURUNO SHANGHAI CO., LTD.**  
Shanghai, China  
www.furuno.com/cn

15093SK Printed in Japan  
Catalogue No. E-425



www.furuno.com

## Upgrade your FCV-1900 Fish Finder

By purchasing and installing a software license you can upgrade your FCV-1900 Fish Finder to a FCV-1900B Hi-Res TruEcho CHIRP Fish Finder or a FCV-1900G TruEcho CHIRP with unique Fish Size Indicator. For further details, please contact your local FURUNO national distributor.



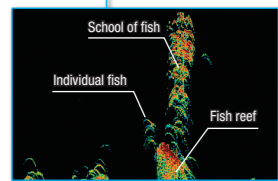
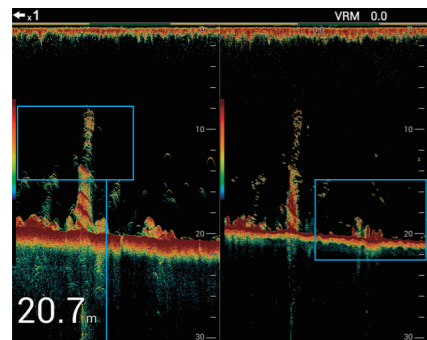
### Model **FCV-1900B**

High resolution echoes from shallow to deep waters made possible with TruEcho CHIRP™ technology

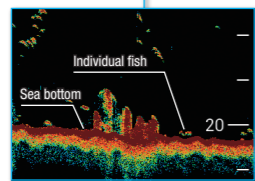


FCV-1900B Hi-Res TruEcho CHIRP Fish Finder allows you to see echoes that would otherwise not have been visible.

#### Sea bottom

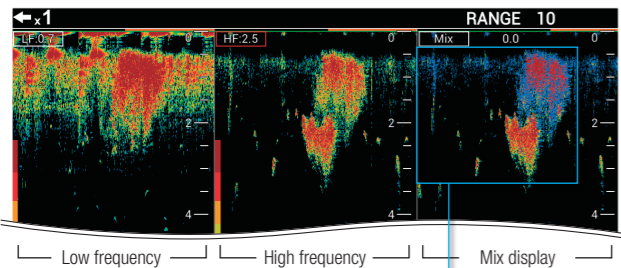


Individual fish can be discriminated within schools of fish, for easy identification of size and species.

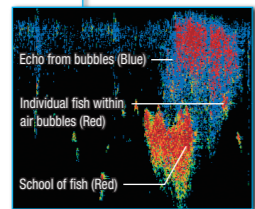


You can easily spot individual fish close to the sea bottom

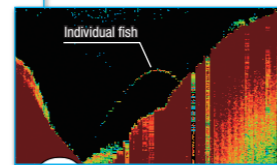
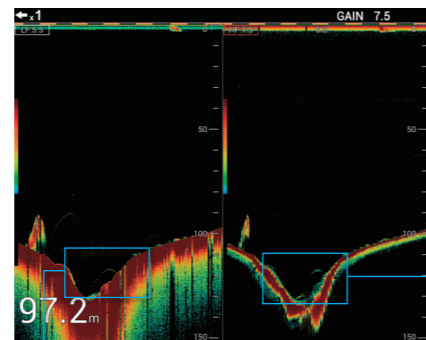
#### Near the surface



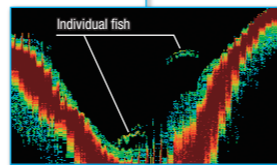
Fish are displayed clearly, even when it is close to the sea surface. In the mix display, bubbles are displayed in blue, and fish are displayed in bright red for easy target discrimination.  
(Recommended transducer: CM275LHW)



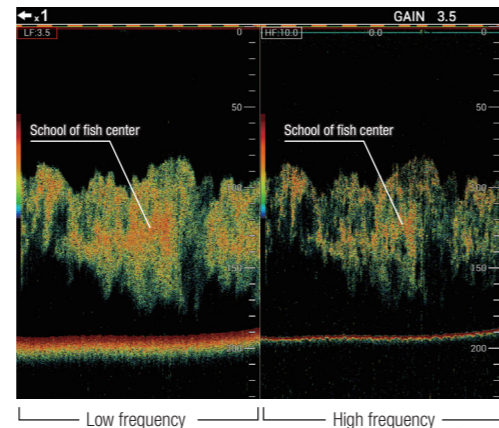
#### Individual fish



With improved depth resolution, individual fish can be observed even at depths of 100 m and deeper. Fish are displayed in a distinct boomerang shape.



#### Middle layer



Spot the center of a school of fish simply by observing the color. Dense echoes are displayed in darker colors.

## TruEcho CHIRP WITH UNIQUE FISH SIZE INDICATOR

### Model **FCV-1900G**

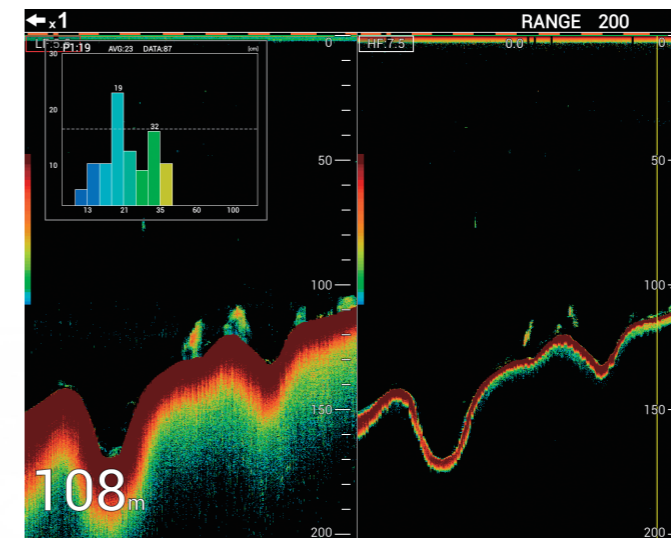
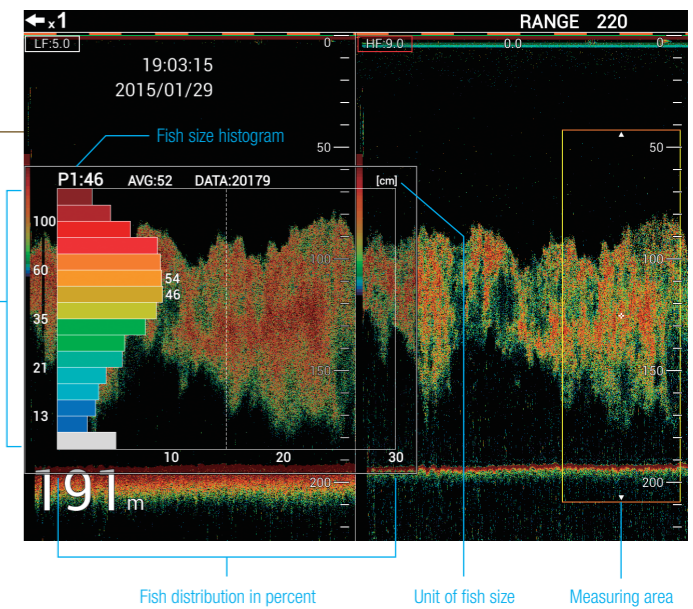
Efficient and sustainable fishing with fish size graph functionality

FCV-1900G features a unique fish size indicator that utilizes TruEcho CHIRP™ technology for precise estimations of fish size and size distribution in schools of fish. You can accurately analyze schools of fish all the way from shallow to deep waters.

#### Identify size and distribution with the fish size graph for increased efficiency at sea

With a quick glance at the simple and efficient graph, you can get all the information you need to identify fish size and distribution. Once you know the fish size and its distribution, you can use this information to estimate the species and whether it's a viable target or not. Together with the TruEcho CHIRP™ technology, the FCV-1900G allows you to choose the best position to throw your net. Then, based on the fish size graph, you can choose the right mesh size for efficient operation.

(Recommended transducers: CM265LH or CM599LH)



School of fish close to the sea bottom.

#### Accurately judge which target to go after

Experience incredibly accurate echoes, even in deep waters thanks to our TruEcho CHIRP™ technology. The FCV-1900G is well suited for trawlers where accurate and reliable information about the sea bottom is necessary. Utilizing the fish size graph, choosing the right target is simple, allowing you to maximize your time at sea, while avoiding unnecessary bycatches.