

SPECIFICATIONS

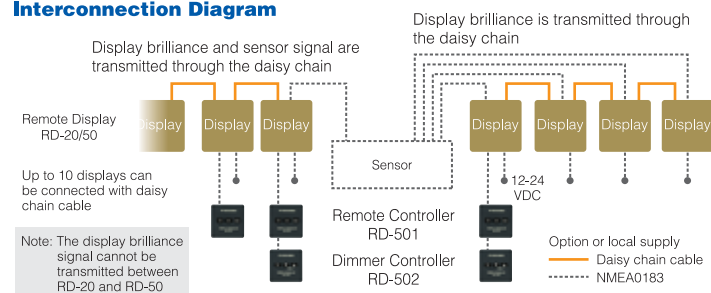


Model	RD-20	RD-50
Product Name	REMOTE DISPLAY	
Display	Red LED	8.4-inch color LCD
Power Supply		
Remote Display (RD-20/50)	DC 12-24 V	DC 12-24 V
Remote Controller (RD-501)		DC 5 V
Dimmer Controller (RD-502)		DC 5 V
Environment		
Temperature	-15°C~+55°C	-25°C~+55°C
Waterproofing	Display	Flush mount: Front: IP22 Back: IP22
	Wall mount (with Waterproof Box)	Front: IP56 Back: IP56
	Remote Controller (RD-501)	Front: IP22 Back: IP20
	Dimmer Controller (RD-502)	Front: IP22 Back: IP20
Vibration	IEC 60945-4	

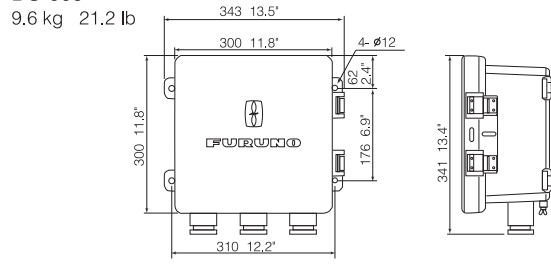
Equipment List

Standard	
Remote Display	RD-20/50
Installation Materials	
Option	
Remote Controller	RD-501
Dimmer Controller	RD-502
Waterproof Box (for RD-50)	DS-605
Bracket for desktop mounting	

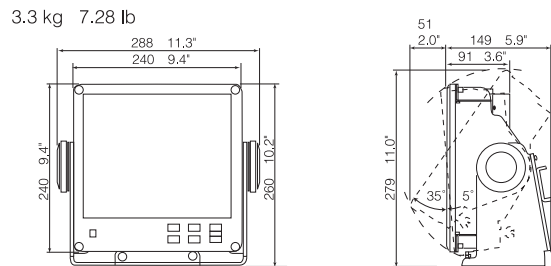
Interconnection Diagram



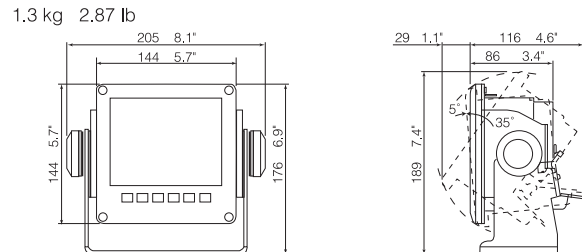
Waterproof Box (for RD-50) DS-605



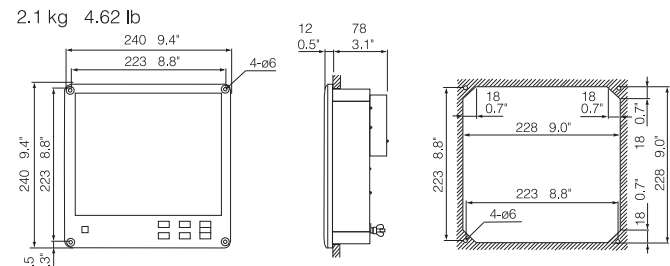
Remote Display (with an optional bracket) RD-50



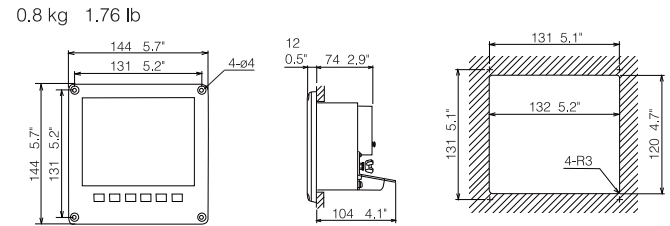
Remote Display (with an optional bracket) RD-20



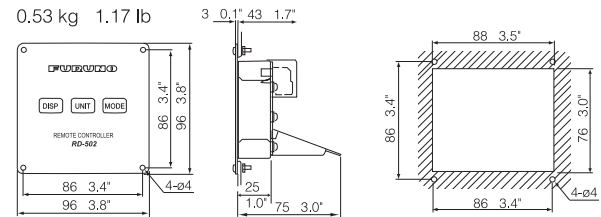
Remote Display (Flush mount) RD-50



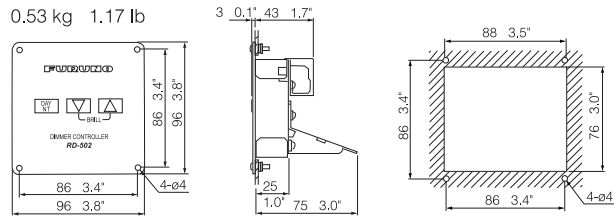
Remote Display (Flush mount) RD-20



Remote Controller RD-501



Dimmer Controller RD-502



FURUNO

REMOTE DISPLAY

RD-20/RD-50



RD-20



RD-50

FURUNODEEPSEA.com

All brand and product names are registered trademarks, trademarks or service marks of their respective holders. SPECIFICATIONS SUBJECT TO CHANGE WITHOUT NOTICE

FURUNO ELECTRIC CO., LTD.
Nishinomiya, Hyogo, Japan
www.furuno.co.jp

FURUNO U.S.A. INC.
Camas, Washington, U.S.A.
www.furunousa.com

FURUNO (UK) LIMITED
Havant, Hampshire, U.K.
www.furuno.co.uk

FURUNO FRANCE S.A.S.
Bordeaux-Mérignac, France
www.furuno.fr

FURUNO ESPAÑA S.A.
Madrid, Spain
www.furuno.es

FURUNO DANMARK AS
Hvidovre, Denmark
www.furuno.dk

FURUNO NORGE A/S
Ålesund, Norway
www.furuno.no

FURUNO SVERIGE AB
Västra Frölunda, Sweden
www.furuno.se

FURUNO FINLAND OY
Espoo, Finland
www.furuno.fi

FURUNO POLSKA Z o.o.
Gdynia, Poland
www.furuno.pl

FURUNO EURUS LLC
St. Petersburg, Russian Federation
www.furuno.com.ru

FURUNO DEUTSCHLAND GmbH
Rellingen, Germany
www.furuno.de

FURUNO HELLAS S.A.
Piraeus, Greece
RICO (PTE) LTD
Singapore
www.rico.com.sg

1010PDF Printed in Japan
Catalogue No. M-1546a

FURUNODEEPSEA.com

FURUNO RD-20/50 give a unified look for the sensor displays that carries an array of important navigation information from onboard sensors

REMOTE DISPLAY

The RD-20/50 are the remote display units that display the data from onboard sensors. The displays are switched by the remote controller. The RD-50, 8.4-inch color LCD, has 3 display modes: digital, analog and graph. The RD-20 shows the data in alphanumeric on its red LED panel.


Up to 10 displays can be connected with a daisy chain cable. The display brilliance of all units connected can be centrally controlled from 1 dimmer controller.



RD-20




RD-50



RD-50

- ▶ High-contrast 8.4-inch color LCD
- ▶ Digital/graph/analog displays available
- ▶ Display orientation of up to 4-way split screen
- ▶ Viewable under the direct sunlight at wing console
- ▶ Adjustable display background color for use in both daytime and night time



RD-20

- ▶ Red LED display
- ▶ Up to 10 displays can be connected with a daisy chain cable
- ▶ Display brilliance can be collectively controlled from one dimmer controller under the daisy chain connection

Suggestion for installation

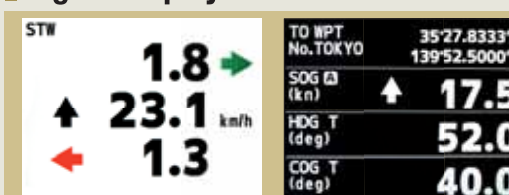
● Overhead console

● Desktop

The RD-20/50 can be mounted on the overhead console as well as on the desktop. Both units come with an optional bracket for desktop mounting. The RD-50 can also be installed overboard with the optional waterproof box.

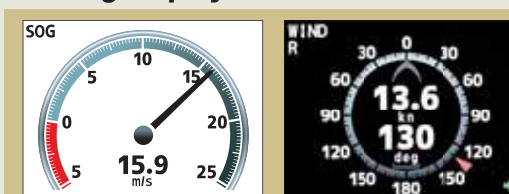
RD-50 Data to be displayed

Digital display



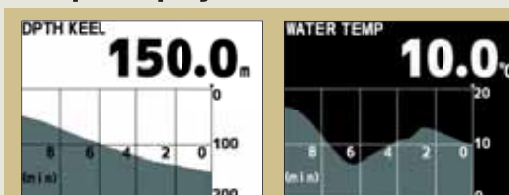
- | | | | |
|---------------------------------|---------------|--------------------------|--------------------|
| • Ship speed | kn, km/h, m/s | • Wind Direction | deg |
| • Heading (HDG) | deg | • / Speed | kn, km/h, m/s, mph |
| • Course (COG) | deg | • Propeller pitch | % |
| • Actual / Ordered rudder angle | deg | • Engine revolutions | rpm |
| • Depth | m, ft, fm | • Shaft revolutions | rpm |
| • Total distance | NM, km | • Time | |
| • Trip distance | NM, km | • Latitude and Longitude | |
| • Water temperature | °C, °F | • Destination | |
| • Rate of turn (ROT) | deg/min | • 1/2/3-axes ship speed | |

Analog display



- | | | | |
|----------------------|--------------------|---------------------------------|-----|
| • Wind Direction | deg | • Engine revolutions | rpm |
| • / Speed | kn, km/h, m/s, mph | • Shaft revolutions | rpm |
| • Propeller pitch | % | • Actual / Ordered rudder angle | deg |
| • Rate of turn (ROT) | deg/min | • Drift / HDG / COG | deg |
| • Ship speed | kn, km/h, m/s | • Time | |

Graph display



- | | |
|---------------------|-----------|
| • Water temperature | °C, °F |
| • Depth | m, ft, fm |

RD-20 Data to be displayed



- | | | | |
|---------------------------------|---------------|----------------------|--------------------|
| • Ship speed | kn, km/h, m/s | • Water temperature | °C, °F |
| • Heading (HDG) | deg | • Rate of turn (ROT) | deg/min |
| • Course (COG) | deg | • Wind Direction | deg |
| • Actual / Ordered rudder angle | deg | • / Speed | kn, km/h, m/s, mph |
| • Depth | m, ft, fm | • Engine revolutions | rpm |
| • Total distance | NM, km | • Propeller pitch | % |
| • Trip distance | NM, km | • Shaft revolutions | rpm |