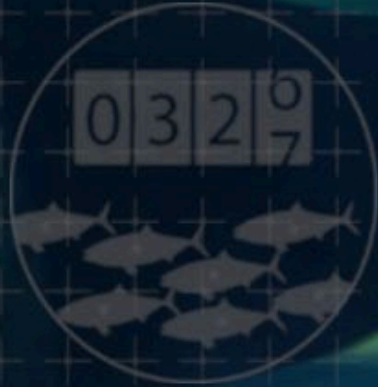


Aqua Scope

Monitor behaviour | Measure size



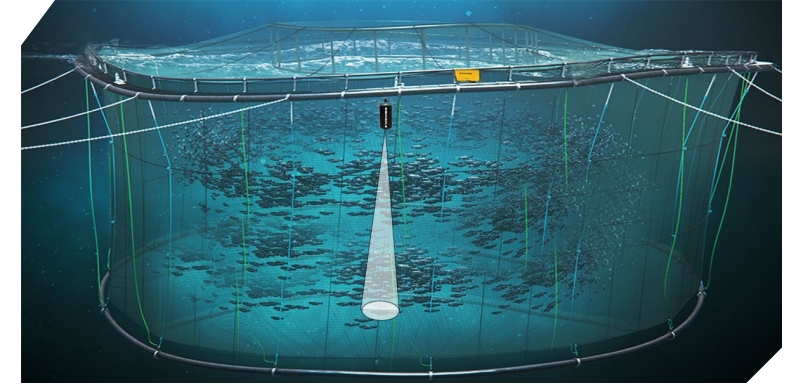
CHALLENGE the INVISIBLE.

Aqua Scope

Our Solution



The echo sounder and edge processing unit are placed in a waterproof casing and attached to the pen.



The hydroacoustic sensor is attached to a floating buoy and placed inside the pen to measure the biomass from surface to bottom.

Observations

- ✓ Swimming speed
- ✓ Swimming angle
- ✓ Fish density per depth
- ✓ Changed behaviour

Analysis

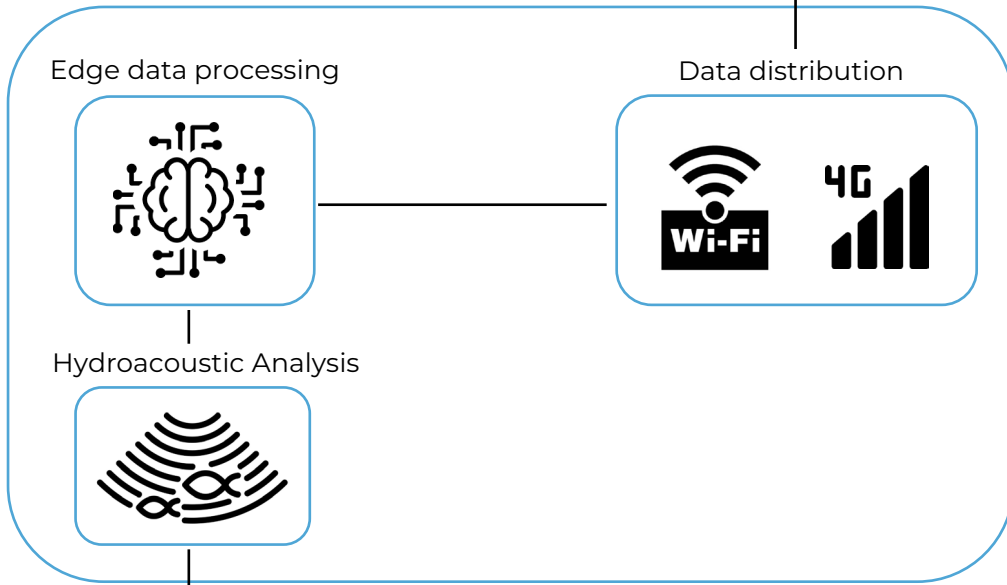
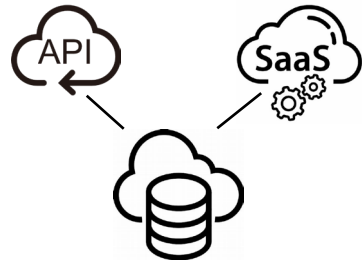
- ✓ Real time observation
- ✓ Trends
- ✓ Average weight
- ✓ Weight distribution
- ✓ Growth graph

Installation

- ✓ Easy installation
- ✓ Quick start-up
- ✓ Observation starts immediately
- ✓ Data transfer to cloud solution
- ✓ Power supply: 230 VAC
- ✓ Requires 4G coverage

Aqua Scope

Cloud Services

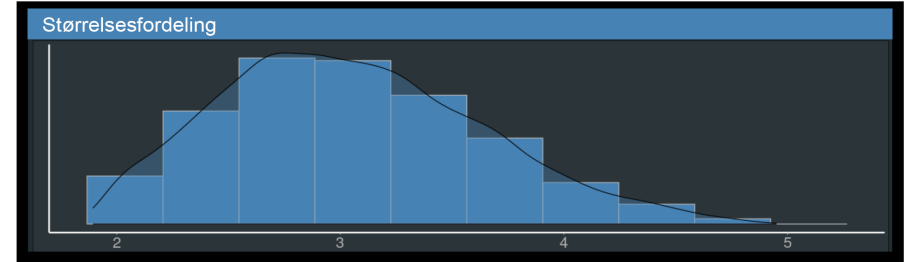


Hydroacoustic sensor

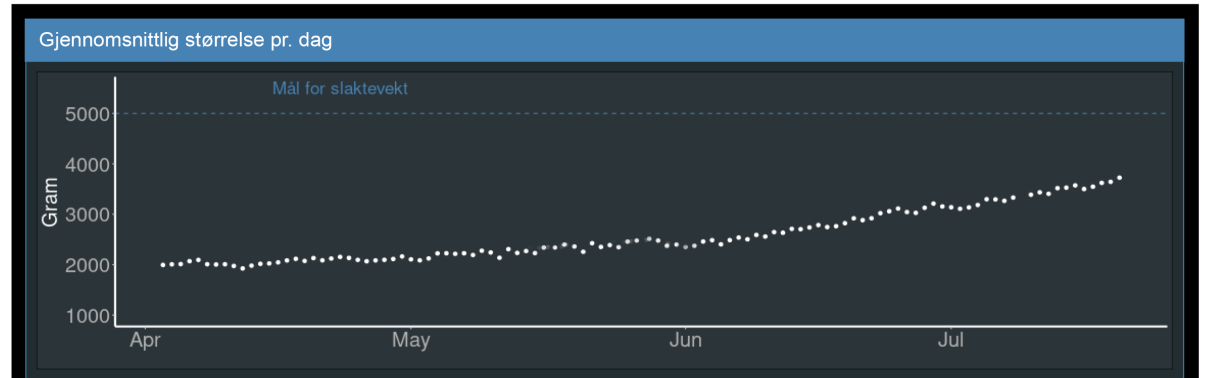
Monitoring system:

pen1
2024/03/08
W: 4.51 Kg
SPD: 0.81 m/s
of samp.: 81532

pen2
2024/03/20
W: 4.55 Kg
SPD: 0.572 m/s
of samp.: 126 562



Estimert slakketabell		
Weightklass in KG	Percentage of population	Estimated number of fish
1	2	18.3
2	3	59.3
3	4	21.2
4	5	1.1



Statistikk		
129711 Antall ping analysert	16257 Antall fiskespor med høykvalitets data	3726 Gjennomsnittlig vekt for 2023-07-20

Aqua Scope

Advanced hydroacoustic

Furuno brings advanced hydroacoustic to the aquaculture segment!

Aqua Scope is developed and tailored specifically to meet the unique needs for observation of farmed salmon.

The solution includes features that provide necessary control of biomass growth. Additionally, Aqua Scope monitors behavior, thus provides unique insight into fish health and welfare.



Product page

Contact us about Furuno Aqua Scope



Thomas Schjøtt Hannevig

Area Sales Manager, Aqua culture

Mobile: +47 413 45 432

E-mail: Thomas.hannevig@furuno.no