

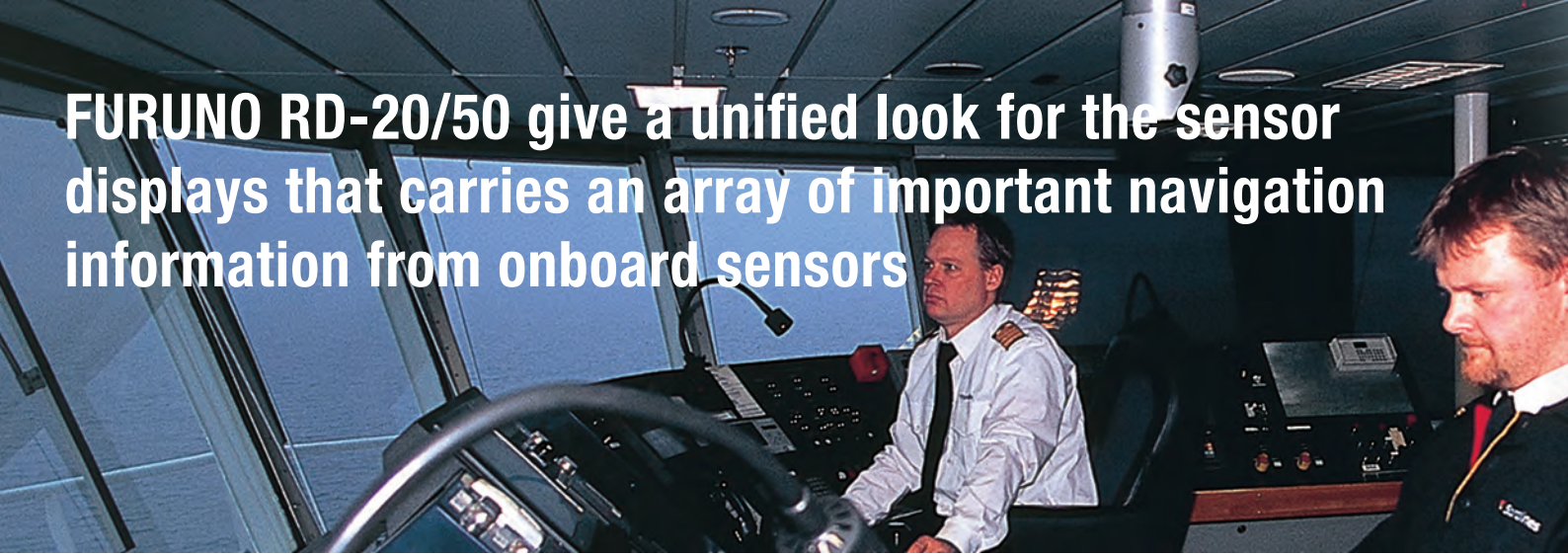
FURUNO

REMOTE DISPLAY



Models:
RD-20/RD-50

FURUNO RD-20/50 give a unified look for the sensor displays that carries an array of important navigation information from onboard sensors



REMOTE DISPLAY

The RD-20/50 are the remote display units that display the data from onboard sensors. The displays are switched by the remote controller. The RD-50, 8.4-inch color LCD, has 3 display modes: digital, analog and graph. The RD-20 shows the data in alphanumerics on its red LED panel.

Up to 10 displays can be connected with a daisy chain cable. The display brilliance of all units connected can be centrally controlled from 1 dimmer controller.



RD-50

- ▶ High-contrast 8.4-inch color LCD
- ▶ Digital/graph/analog displays available
- ▶ Display orientation of up to 4-way split screen
- ▶ Viewable under the direct sunlight at wing console
- ▶ Adjustable display background color for use in both daytime and night time

▶ Red LED display

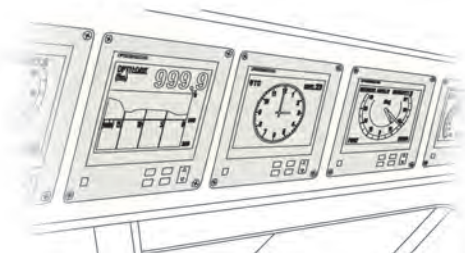
- ▶ Up to 10 displays can be connected with a daisy chain cable
- ▶ Display brilliance can be collectively controlled from one dimmer controller under the daisy chain connection



RD-20

■ Suggestion for installation

- Overhead console



- Desktop



The RD-20/50 can be mounted on the overhead console as well as on the desktop. Both units come with an optional bracket for desktop mounting. The RD-50 can also be installed overboard with the optional waterproof box.



RD-20



RD-50

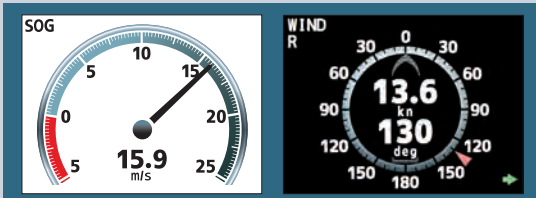
RD-50 Data to be displayed

Digital display



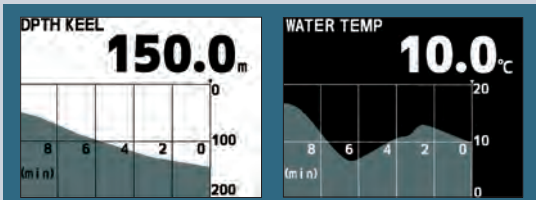
- Ship speed kn, km/h, m/s
- Heading (HDG) deg
- Course (COG) deg
- Actual / Ordered rudder angle deg
- Depth m, ft, fm
- Total distance NM, km
- Trip distance NM, km
- Water temperature °C, °F
- Rate of turn (ROT) deg/min
- Wind Direction deg
- / Speed kn, km/h, m/s, mph
- Propeller pitch %
- Engine revolutions rpm
- Shaft revolutions rpm
- Time
- Latitude and Longitude
- Destination
- 1/2/3-axes ship speed

Analog display



- Wind Direction deg
- / Speed kn, km/h, m/s, mph
- Propeller pitch %
- Rate of turn (ROT) deg/min
- Ship speed kn, km/h, m/s
- Engine revolutions rpm
- Shaft revolutions rpm
- Actual / Ordered rudder angle deg
- Drift / HDG / COG deg
- Time

Graph display



- Water temperature °C, °F
- Depth m, ft, fm

RD-20 Data to be displayed



- Ship speed kn, km/h, m/s
- Heading (HDG) deg
- Course (COG) deg
- Actual / Ordered rudder angle deg
- Depth m, ft, fm
- Total distance NM, km
- Trip distance NM, km
- Water temperature °C, °F
- Rate of turn (ROT) deg/min
- Wind Direction deg
- / Speed kn, km/h, m/s, mph
- Engine revolutions rpm
- Propeller pitch %
- Shaft revolutions rpm

SPECIFICATIONS

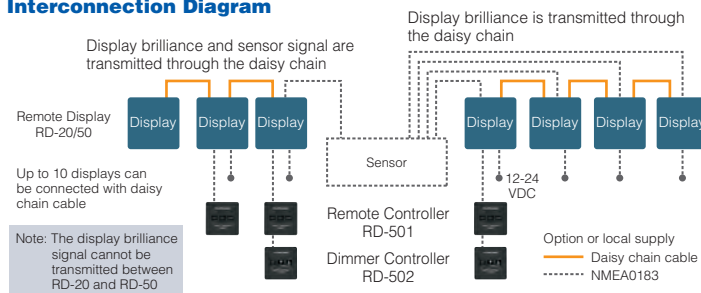


Model	RD-20	RD-50
Product Name	REMOTE DISPLAY	
Display	Red LED	8.4-inch color LCD
Power Supply		
Remote Display (RD-20/50)	DC 12-24 V	DC 12-24 V
Remote Controller (RD-501)		DC 5 V
Dimmer Controller (RD-502)		DC 5 V
Environment		
Temperature	-15°C~+55°C	-25°C~+55°C
Waterproofing	Display	
	Flush mount	Front: IP22 Back: IP22
	Wall mount (with Waterproof Box)	—
	Remote Controller (RD-501)	Front: IP22 Back: IP20
Dimmer Controller (RD-502)	Front: IP22 Back: IP20	
Vibration	IEC 60945-4	

Equipment List

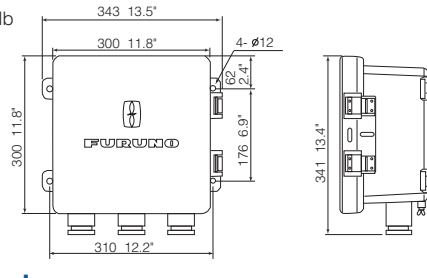
Standard	
Remote Display	RD-20/50
Installation Materials	
Option	
Remote Controller	RD-501
Dimmer Controller	RD-502
Waterproof Box (for RD-50)	DS-605
Bracket for desktop mounting	

Interconnection Diagram



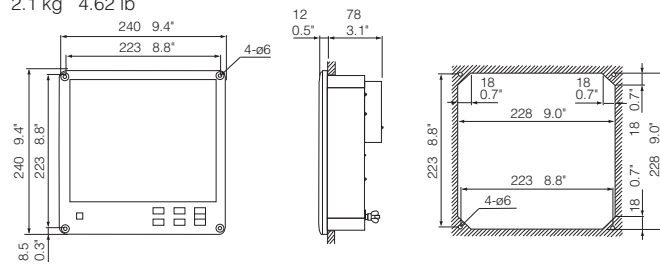
Waterproof Box (for RD-50)

DS-605
9.6 kg 21.2 lb



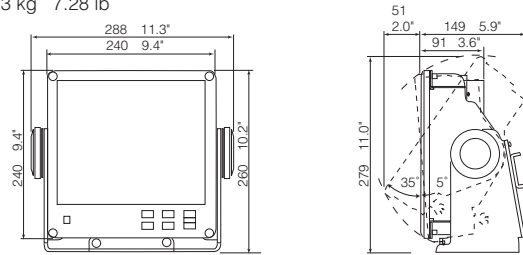
Remote Display (Flush mount)

RD-50
2.1 kg 4.62 lb



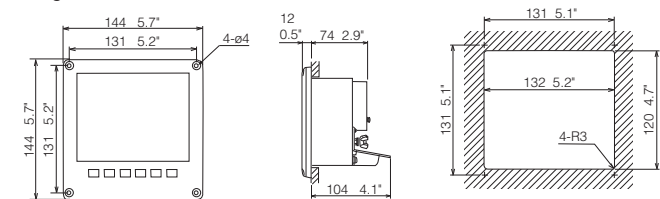
Remote Display (with an optional bracket)

RD-50
3.3 kg 7.28 lb



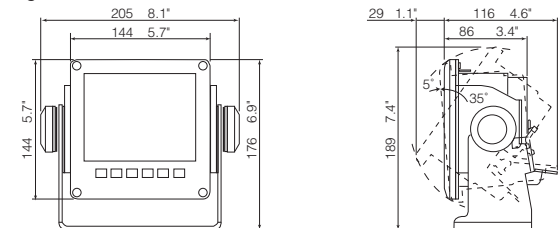
Remote Display (Flush mount)

RD-20
0.8 kg 1.76 lb



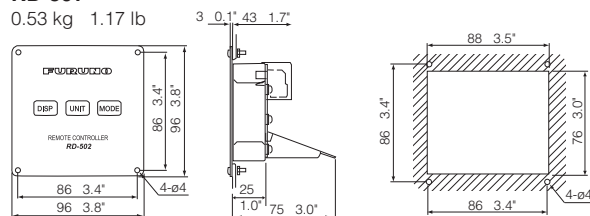
Remote Display (with an optional bracket)

RD-20
1.3 kg 2.87 lb



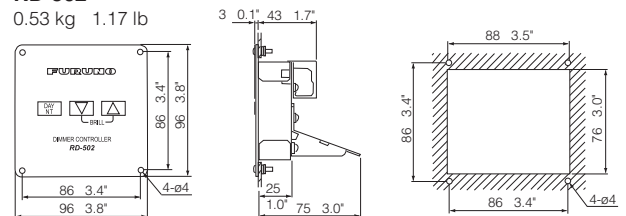
Remote Controller

RD-501
0.53 kg 1.17 lb



Dimmer Controller

RD-502
0.53 kg 1.17 lb



All brand and product names are registered trademarks, trademarks or service marks of their respective holders.
 SPECIFICATIONS SUBJECT TO CHANGE WITHOUT NOTICE

FURUNO ELECTRIC CO., LTD.
Japan | www.furuno.com

FURUNO U.S.A., INC.
U.S.A. | www.furunousa.com

FURUNO PANAMA S.A.
Republic of Panama | www.furuno.com.pa

FURUNO (UK) LIMITED
U.K. | www.furuno.co.uk

FURUNO NORGE A/S
Norway | www.furuno.no

FURUNO DANMARK A/S
Denmark | www.furuno.dk

FURUNO SVERIGE AB
Sweden | www.furuno.se

FURUNO FINLAND OY
Finland | www.furuno.fi

FURUNO POLSKA Sp. z o.o.
Poland | www.furuno.pl

FURUNO DEUTSCHLAND GmbH
Germany | www.furuno.de

FURUNO FRANCE S.A.S.
France | www.furuno.fr

FURUNO ESPAÑA S.A.
Spain | www.furuno.es

FURUNO ITALIA S.R.L.
Italy | www.furuno.it

FURUNO HELLAS S.A.
Greece | www.furuno.gr

FURUNO (CYPRUS) LTD
Cyprus | www.furuno.com.cy

FURUNO SHANGHAI CO., LTD.
China | www.furuno.com/cn

FURUNO CHINA CO., LTD.
Hong Kong | www.furuno.com/cn

FURUNO KOREA CO., LTD
Korea

FURUNO SINGAPORE
Singapore | www.furuno.sg

PT FURUNO ELECTRIC INDONESIA
Indonesia | www.furuno.id

FURUNO ELECTRIC (MALAYSIA) SND. BHD.

Malaysia | www.furuno.my