

DATA SHEET

Manufactured for: Hatteland Technology AS
 Product: 23.8 inch Industrial Monitor
 Type: ED 24T01 FHD-xxx-xx

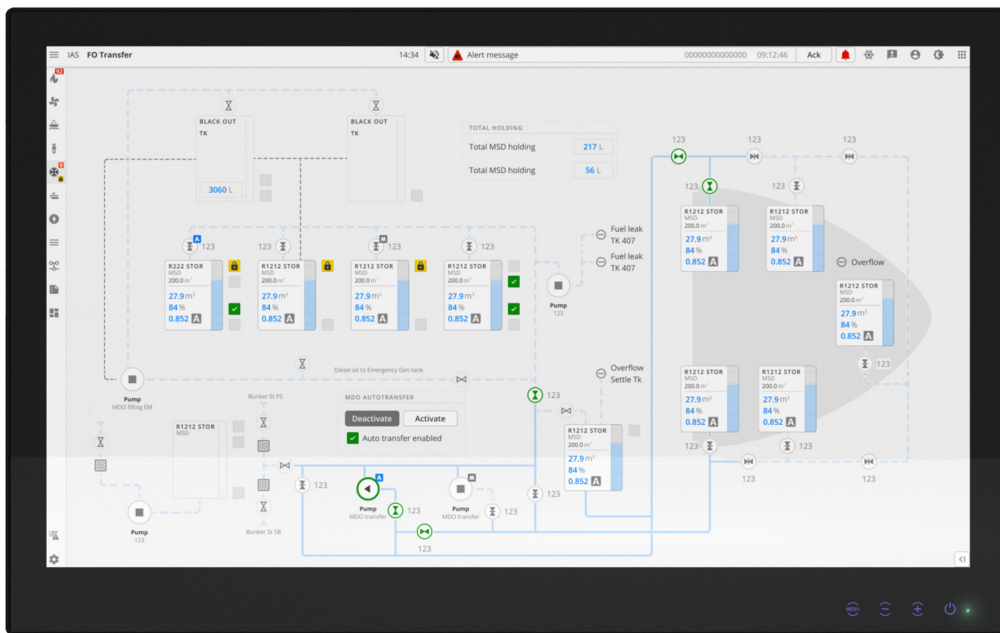
i Dimensions might be shown with or without decimals and indicated as mm [inches]. Tolerance on drawings is +/- 1mm. For accurate measurements, check relevant DWG file.



23.8" ENIX Pro Monitor - Series ED

The ENIX Pro line - Series ED range of products provides SXGA to 4K resolution monitors to a wide range of industrial applications: HMI, safety systems, navigation, CCTV, voyage planning, sonar, tactical command & control platforms, and more. Its cutting-edge, high-definition LED monitor technology enables the presentation of large amounts of data onto one screen, instead of multiple monitors.

The 23.8" is available with Projected Capacitive Touch and Anti Glare coating for better functionality in all situations and conditions. It also features an On Screen Monitor menu and Keypad for ease of use.



Wide screen



High Contrast



Backlit LED



Touch keypad

TECHNICAL SPECIFICATIONS

23.8 INCH ENIX PRO MONITOR - SERIES ED ED 24T01 FHD-xxx-xx

TFT Technology

- High Quality TFT with LED Backlight Technology
- 23.8 inch viewable image size, Widescreen, Aspect Ratio 16:9
- TFT active-matrix liquid crystal panel, RGB vertical stripe
- AHVA (IPS: - Advanced Hyper Viewing Angle) LCD Technology

TFT Characteristics

Native Resolution	1920 x 1080 (FHD)
Pixel Pitch (RGB)	0.2745 (H) x 0.2745 (V) mm
Response Time	14 ms (typical) (G to G)
Contrast Ratio	1000:1 (typical)
Light Intensity	400 cd/m ² (typical)
Viewable Angle	+/- 89 deg. (typical) (Up/Down/Left/Right)
Active Display Area	527.10 (H) x 296.50 (V) mm
Max Colors	16.7M colors (RGB 8 bits)

Supported Signals (Resolution)

FHD	1920 x 1080* @60Hz
UXGA	1600 x 1200 @60Hz
SXGA	1280 x 1024 @60Hz
XGA	1024 x 768 @60Hz
SVGA / VESA Analog	800 x 600 @60/56Hz
VGA / VESA	640 x 480 @60Hz
Mac	832 x 624 @75Hz

Features

- Backlight dimmable to 0 cd/m²
- Remote control, RJ-45, external wheel key encoder tool
- Remote control, RS-232, serial command?
- Touch keypad
- Panel mount clips

Power Specifications

Multi-power AC+DC	: 100-240V AC - 50/60Hz + 24 VDC
Power Consumption:	
ED 24T01 FHD-MA9-SA	: 26W (Typ) - 60W (Max)
ED 24T01 FHD-MA9-SP	: 27W (Typ) - 60W (Max)

Physical Considerations

Measurements	W: 574.00 mm [22.59 inch] H: 359.00 mm [14.13 inch] D: 57.00 mm [2.24 inch]
--------------	---

Approx Weight:	
ED 24T01 FHD-MA9-SA	: 6.1 kg / 13.448 lbs
ED 24T01 FHD-MA9-SP	: 6.6 kg / 14.55 lbs

Chassis Material	Aluminium
VESA Support	100 x 100 mm (4 x M4)
Panel Mount compatible	Panel Mount Clips (6x)

Approvals & certificates

These products have been tested / type approved by the following classification societies:

FCC	CE
-----	----

Signal Terminals

DVI-D Input	1 x 24p DVI (female) Max 1920x1080@60Hz
VGA Input	1 x 15p HD D-SUB (female) Max 1920x1080@60Hz
HDMI Input	1 x 19p HDMI (female) Max 1920x1080@60Hz (HDMI 1.3 compliant)
DP Input	1 x 20p DisplayPort (female) Max 1920x1080@60Hz DisplayPort 1.2a compliant
Touch Interface	1 x USB Type B Connector (female)
RS-232 Port	1 x 9p D-SUB (female) non-isolated for Remote Control
RJ-45 Port	1 x Ethernet RJ45 8P8C, GPIO interface, for Remote Control (Use the ET JGW STD-A1)
DC Power IN	1 x 3-pin Terminal Block 5.08
AC Power IN	1 x Std IEC Inlet

User Controls (On right side - Touch Keypad)

- Power On/Off (monitor)
- Brightness Control (-/+) also used for Navigation control
- On Screen Monitor Menu

Environmental Considerations:

Operating	Temperature -5°C to +45°C
Storage	Temperature -20°C to +60°C
Humidity	Up to 90% (Operating / Storage)
IP Rating	Protection: IP65 front - IP22 Rest of unit
Backlight Lifetime	50000 hrs

Lifetime Considerations:

Even though the test conditions for bridge units provide for a maximum operating temperature of 45°C, continuous operation of all electronic components should, if possible, take place at ambient temperatures of only 25°C. This is a necessary prerequisite for long life and low service costs.

Available Accessories

ET JGW STD-A1 : 1 x ENIX Pro remote controller (RJ45 harness/encoder)

Please see user manual for more information

Factory Options

- Projected Capacitive Touch Screen (Multitouch, USB interface)
- AG Coated Glass

Available Models:

ED 24T01 FHD-MA9-SA
23.8" ENIX Pro Monitor FHD ACDC Black Slim Frame AG RTAP

ED 24T01 FHD-MA9-SP
23.8" ENIX Pro Monitor FHD ACDC Black Slim Frame PCTouch AG RTAP

Contents of Package:

- 1 x CABLE POWER EU 1.83M
- 1 x CABLE HDMI 1.8M
- 1 x DC PLUG
- 6 x PANEL MOUNTING CLAMP(M5*50,SUS)
- 6 x SRCEW(M5*8,ISO 4762,SUS)
- 1 x CABLE USB A TO B,1.8M^[1]

^[1]Only for Touch model

i All specifications are subject to change without prior notice! Please visit www.hattelandtechnology.com for the latest electronic version.

i Dimensions might be shown with or without decimals and indicated as mm [inches]. Tolerance on drawings is +/- 1mm. For accurate measurements, check relevant DWG file.

