

DATA SHEET

Manufactured for: Hatteland Technology AS
Product: 19.0 inch Industrial Monitor
Type: ED 19T01 SXG-xxx-xx

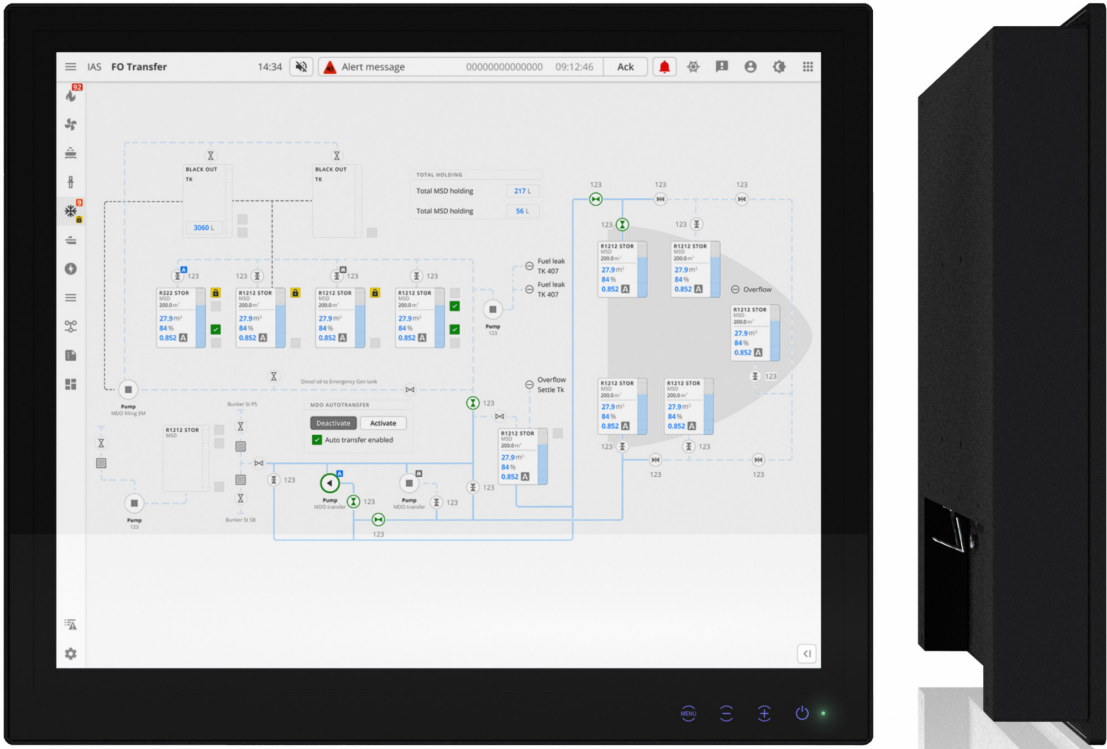
i Dimensions might be shown with or without decimals and indicated as mm [inches]. Tolerance on drawings is +/- 1mm. For accurate measurements, check relevant DWG file.



19.0" ENIX Pro Monitor - Series ED

The ENIX Pro line - Series ED range of products provides SXGA to 4K resolution monitors to a wide range of industrial applications: HMI, safety systems, navigation, CCTV, voyage planning, sonar, tactical command & control platforms, and more. Its cutting-edge, high-definition LED monitor technology enables the presentation of large amounts of data onto one screen, instead of multiple monitors.

The 19.0" is available with Projected Capacitive Touch and Anti Glare coating for better functionality in all situations and conditions. It also features an On Screen Monitor menu and Keypad for ease of use.



Backlit LED



High Contrast



Touch keypad

TECHNICAL SPECIFICATIONS

19.0 INCH ENIX PRO MONITOR - SERIES ED ED 19T01 SXG-xxx-xx

TFT Technology

- High Quality TFT with LED Backlight Technology
- 19.0 inch viewable image size, Aspect Ratio 5:4
- TFT active-matrix liquid crystal panel, RGB vertical stripe
- MVA LCD Technology

TFT Characteristics

Native Resolution	1280 x 1024 (SXGA)
Pixel Pitch (RGB)	0.294 (H) x 0.294 (V) mm
Response Time	20 ms Rising + Falling (typical)
Contrast Ratio	2000:1 (typical)
Light Intensity	350 cd/m ² (typical) 315 cd/m ² with AG Coated Glass (typical)
Viewable Angle	+/- 89 deg. (typical) (Up/Down/Left/Right)
Active Display Area	378.00 (H) x 303.00 (V) mm
Max Colors	16.7M color (RGB 8bit)

Supported Signals (Resolution)

SXGA	1280 x 1024@60Hz*
XGA	1024 x 768@60Hz
SVGA / VESA Analog	800 x 600@60/56Hz
VGA / VESA	640 x 480@60Hz
MAC	832 x 624@75Hz

Features

- Backlight dimmable to 0 cd/m²
- Remote control, RJ-45, external wheel key encoder tool
- Remote control, RS-232, serial command
- Touch keypad
- Panel mount clips

Power Specifications

Multi-power AC+DC	: 100-240V AC - 50/60Hz + 24 VDC
Power Consumption:	
ED 19T01 SXG-MA9-SA	: 21W (Typ) - 60W (Max)
ED 19T01 SXG-MA9-SP	: 22W (Typ) - 60W (Max)

Physical Considerations

Measurements	W: 425.00mm [16.73 inch] H: 362.50 mm [14.27 inch] D: 62.00 mm [2.44inch]
--------------	---

Approx Weight:	
ED 19T01 SXG-MA9-SA	: 5 kg / 11.023 lbs
ED 19T01 SXG-MA9-SP	: 5.22 kg / 11.508 lbs

Chassis Material	Aluminium
VESA Support	100 x 100 mm (4 x M4)
Panel Mount Compatible	Panel Mount Clips (4 x)

Approvals & certificates

These products have been tested / type approved by the following classification societies:

FCC	CE
-----	----

Signal Terminals

DVI-D Input	1 x 29p DVI-D (female) Max 1280x1024@60Hz
VGA Input	1 x 15p HD D-SUB (female) Max 1280x1024@60Hz
DP Input	1 x 20p DisplayPort (female) Max 1280x1024@60Hz
HDMI Input	1 x 19p HDMI (female) Max 1280x1024@60Hz
Touch Interface	1 x USB Type B Connector (female, Only for touch model)
RS-232 Port	1 x 9 pin D-SUB (female) non-isolated To Remote Control
RJ-45 Port	1 x Ethernet RJ45 8P8C, GPIO interface, for Remote Control (Use the ET JGW STD-A1)
AC Power IN	1 x Std IEC Inlet
DC Power IN	1 x 3-pin Terminal Block 5.08

User Controls (On right side - Touch Keypad)

- Power On/Off (monitor)
- Brightness Control (-/+) also used for Navigation control
- On Screen Monitor Menu

Environmental Considerations:

Operating	Temperature -5°C to +45°C
Storage	Temperature -20°C to +60°C
Humidity	Up to 90% (Operating / Storage)
IP Rating	Protection: IP65 front - IP22 Rest of unit
Backlight Lifetime	50000 hrs

Lifetime Considerations:

Even though the test conditions for bridge units provide for a maximum operating temperature of 45°C, continuous operation of all electronic components should, if possible, take place at ambient temperatures of only 25°C. This is a necessary prerequisite for long life and low service costs.

Available Accessories

ET JGW STD-A1	: 1 x ENIX Pro remote controller (RJ45 harness/encoder)
---------------	---

Please see user manual for more information

Factory Options

- Projected Capacitive Touch Screen (Multitouch, USB interface)
- AG Coated Glass

Available models:

ED 19T01 SXG-MA9-SA
19.0" ENIX Pro Monitor SXGA ACDC Black Slim Frame AG RTAP

ED 19T01 SXG-MA9-SP
19.0" ENIX Pro Monitor SXGA ACDC Black Slim Frame PCTouch AG RTAP

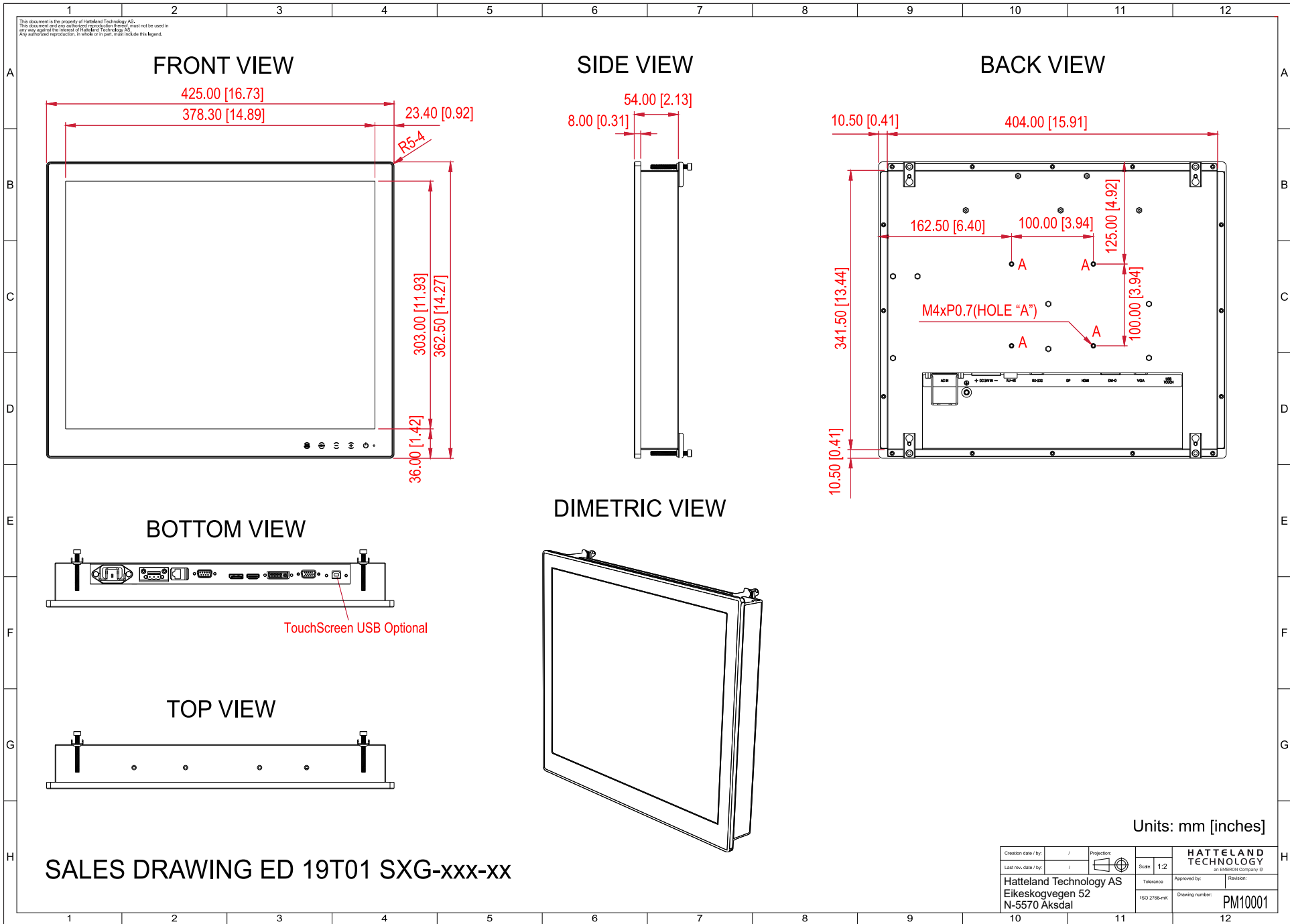
Contents of Package:

- 1 x CABLE POWER EU 1.83M
- 1 x CABLE HDMI 1.8M
- 1 x DC PLUG
- 4 x PANEL MOUNTING CLAMP(M5*50,SUS)
- 4 x SRCEW(M5*8,ISO 4762,SUS)
- 1 x CABLE USB A TO B, 1.8M^[1]

^[1]Only for Touch model

i All specifications are subject to change without prior notice! Please visit www.hattelandtechnology.com for the latest electronic version.

i Dimensions might be shown with or without decimals and indicated as mm [inches]. Tolerance on drawings is +/- 1mm. For accurate measurements, check relevant DWG file.



SALES DRAWING ED 19T01 SXG-xxx-xx

Units: mm [inches]

Creation date / by:	/	Projection:		Scale:	1:2	HATTELAND TECHNOLOGY an EMBRON Company ©	
Last rev. date / by:	/	Tolerance:		Approved by:		Revision:	
Hatteland Technology AS Eikeskogvegen 52 N-5570 Akdsdal			ISO 2768-mk	Drawing number:	PM10001		