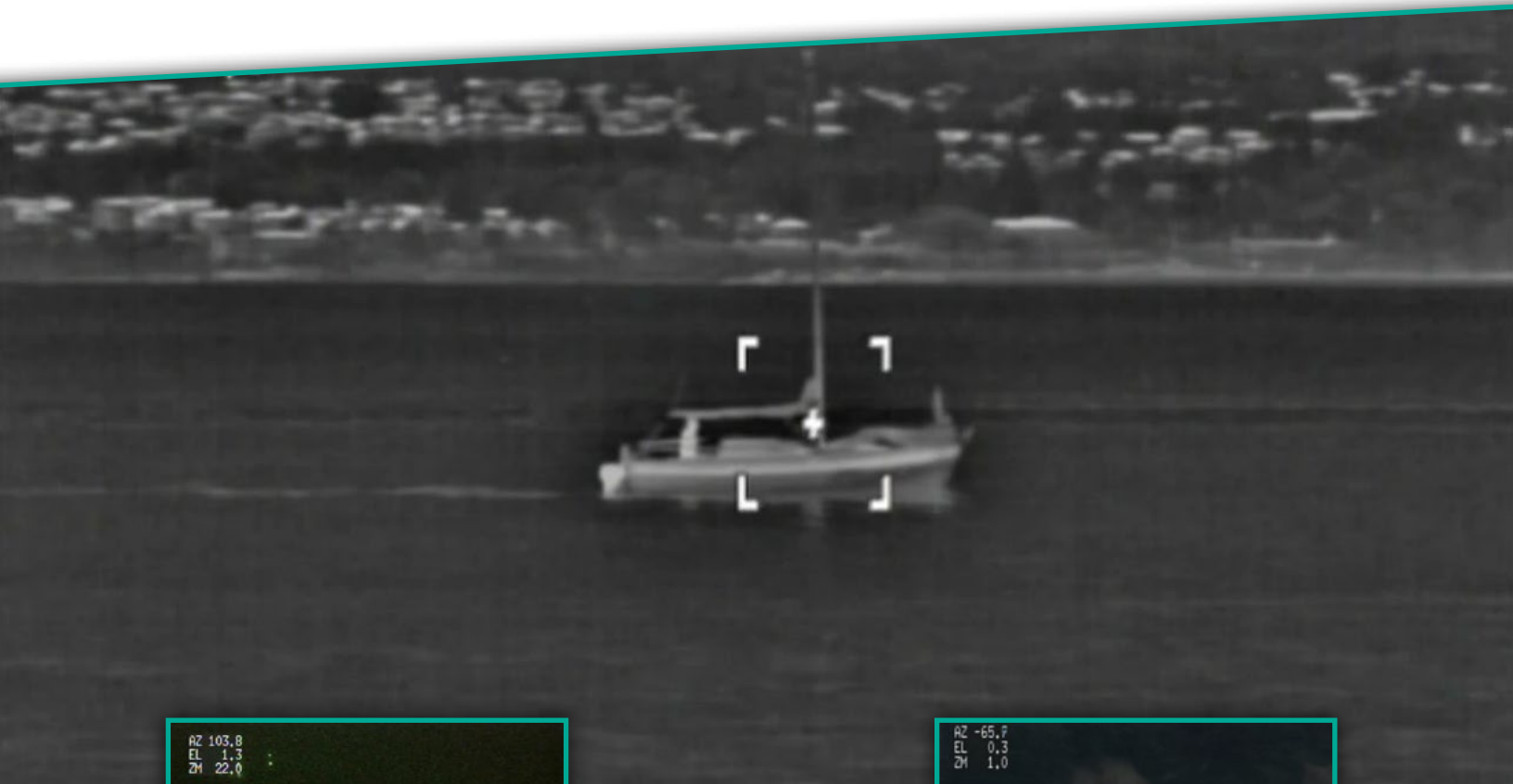


# VTM - Video Tracking Module



## Auto Detection & Tracking

The add-on Video Tracking Module (VTM) for the Night Navigator™ is designed to provide the user with an array of video tracking tools through a simple one-touch tracking interface.

The VTM provides quick access to the most effective and customizable video tracking options and also slaves to radar for complete tracking coverage.

Easily integrated into Night Navigator 3 and Night Navigator 3000 installations, the VTM comes ready to use with the most effective object tracking tools to aid in navigation and observation.

### Applications:

- Navigation
- Obstacle detection: small craft, debris, ice/bergy bits, etc
- Observation
- Early detection of potential security threats
- SAR support

[www.currentcorp.com](http://www.currentcorp.com)

## Main Features

- **Add-On Object Detection & Tracking**  
Night Navigator 3 and Night Navigator 3000 Camera Systems
- **Customizable Video Tracking Algorithms**  
- 9 algorithms for different applications
- **Radar Tracking**  
- Slaves to objects defined by radar in SD mode
- **Rugged Hardware Controls**  
- Panel mount controller
- **Compact, Unobtrusive**

# VTM - Video Tracking Module



## Video Tracking

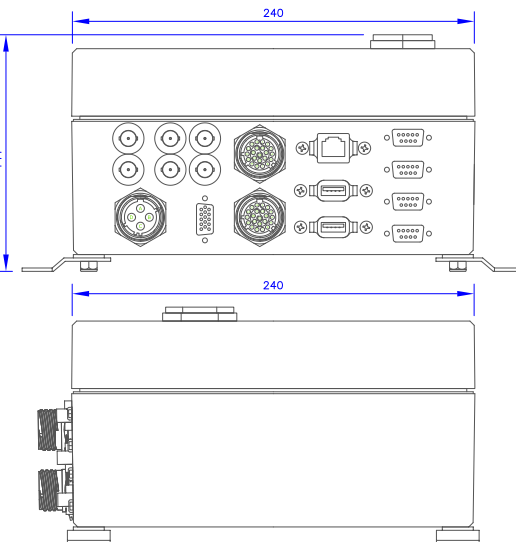
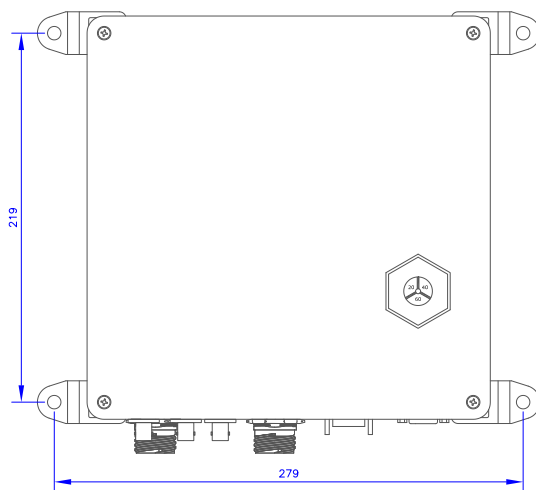
Boat Tracking (BT)	Fast moving man-made objects
Dynamic Centroid (Ce)	Objects that are small and distinctive
Dynamic Correlation (Co)	Large objects which are difficult to distinguish from background clutter
Hot Spot (HS)	Objects that are very small and high contrast
Threshold (Th)	Tracks objects above or below user-defined threshold
Motion on Motion (M2)	Movement in a moving scene
Ground to Air (GA)	Tracking airplanes in the sky from a ground based camera
Scene Lock (SL)	Physically stabilizes the imagery
Motion within Still (Mo)	Searches for motion within still image

\*Tracking functionality available only composite video mode.

## Radar Tracking

Features:	Heads-up, North-up, Automatic, Cursor tracking, Target tracking (0-99)
-----------	--

## VTM Diagram



## Physical Dimensions

Width:	24 cm (9.4 in)
Length:	24 cm (9.4 in)
Height:	13.6 cm (5.4 in)
Weight:	4 kg (8.8 lbs)
Voltage:	20 to 28VDC
Max Operating Temperature:	-40C° to +80C°
IP Rating:	IP67

## Video Display and Signal

NTSC (RS170) or PAL (CCIR) format:	Must be specified at time of order
Video Outputs:	2x Primary Composite Video 2x Secondary Composite Video 1x Primary VGA Video
On-Screen Information Display:	Position, Heading, Speed over Ground, Reticle, Radar Information & Camera Functions

## Panel-Mount Controller

Radar Cursor & ARPA Target Slaving:	Protocol: NMEA 0183 (RS422/RS232)
Integrated graphical information display:	Position, Heading & Camera Functions
Dimensions (W x H):	16.7 x 23.6 cm (6.6 x 9.3 in)