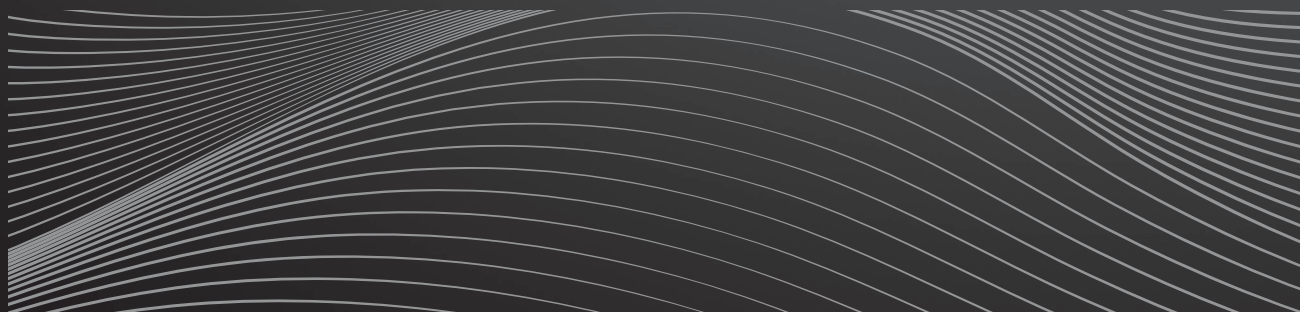
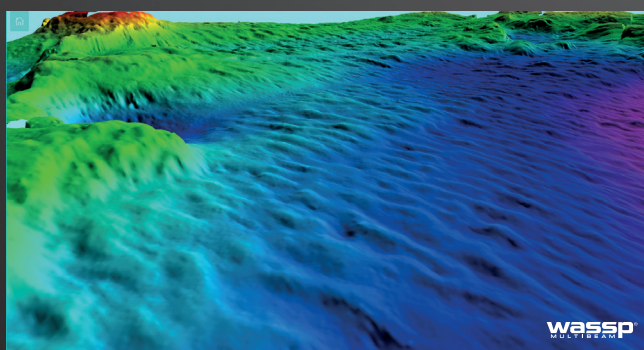


W SERIES

MULTIBEAM FOR REMOTE MAPPING

EXPLORE IT ALL



W SERIES

wassp[®]
MULTIBEAM

SEE IT ALL



DISCOVER A NEW WORLD WITH THE LATEST INNOVATION FROM WASSP

Outstanding performance, versatility and value. That's what you expect and exactly what you get with the new **W3** sonar from WASSP.

This next generation multibeam sonar has been redesigned from the ground up around a new fully digital DRX transceiver. It delivers on every front – accurate, versatile, user-friendly and most importantly, scalable to your exact needs.

The only thing that hasn't changed with the **W3** is our commitment to bring you a multibeam sonar at a cost-effective price.

wassp[®]
MULTIBEAM

SEE IT ALL

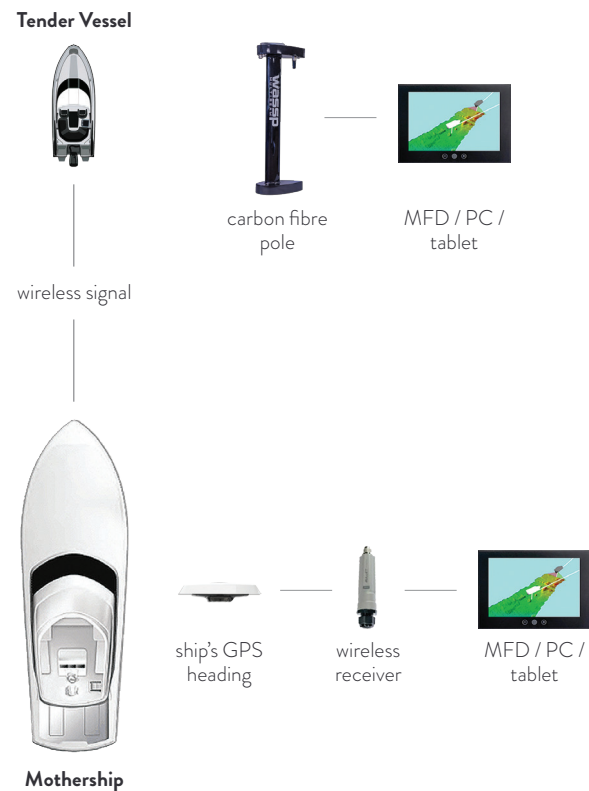
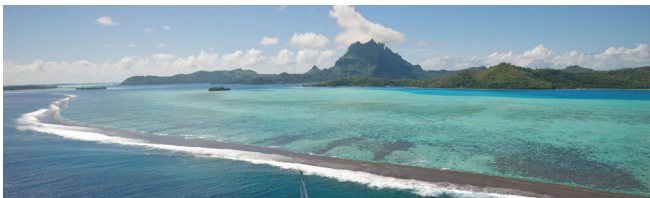
W3

REAL-TIME REMOTE MAPPING WITH MULTIBEAM SONAR

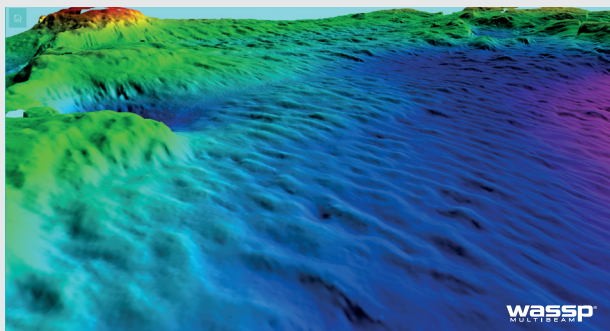
The **W3** allows for long range **real-time** remote mapping and advanced “store-and-forward” technology in a buffer memory (up to 2 hours) for out of range synchronisation of data.

Captains are now able to remotely gather accurate bathymetry information previously unavailable - enabling safe navigation and anchorage in poorly chartered regions.

For vessels (in particular, Superyachts) exploring remote locations and dive sites or wrecks, the **W3** is the ideal solution for minimising the risk of accidental damages.

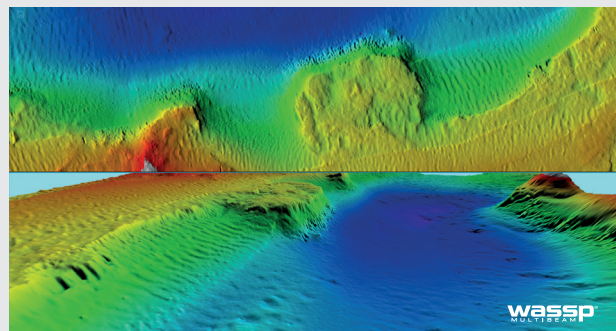


EXPLORE THE UNKNOWN WITH THE UTMOST CONFIDENCE



The **W3** is set to revolutionise exploration with its Wideband CHIRP technology and Wireless capability.

Scanning a 120 degrees swath port to starboard and using 224 beams, the **W3** delivers each and every time. By using advanced signal processing, you get a complete picture of seafloor bathymetry with ease.



DRX MULTIBEAM HARDWARE FOR THE FUTURE

This innovative all-in-one “black-box” is not just a robust hardware platform but also introduces **cutting-edge technical innovations and incredible versatility for exploring a vast range of areas**. This opens countless new possibilities for your operations.

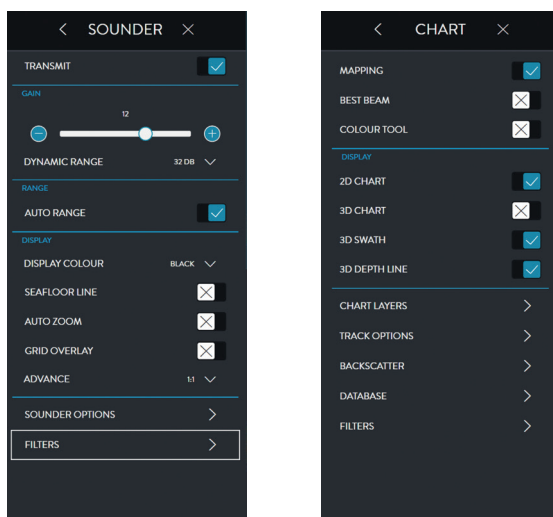


- Dimensions (L x W x H): 377 x 260 x 132mm
- Power supply: 9-32VDC

DRX

NEW EASY-TO-USE INTERFACE

The **W3** introduces a new simplified WASSP CDX for control, visualisation and data management while still providing a comprehensive set of functions to meet the most challenging exploration requirements.



SEE THE UNSEEN

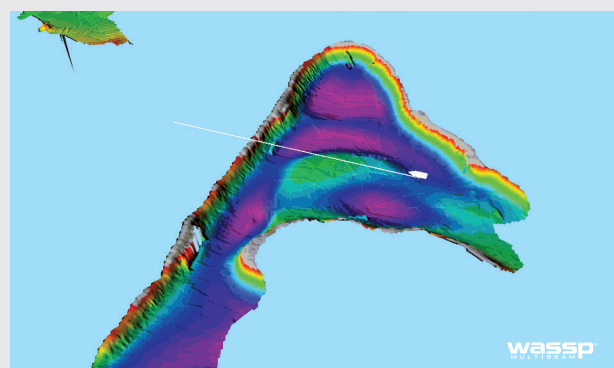
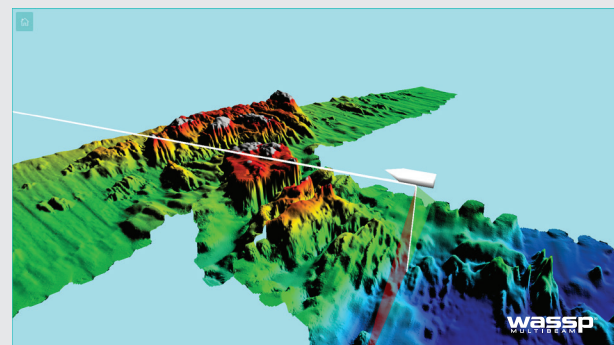


Image captured on MY DRAGONFLY

KEY FEATURES

- ▶ **New all-in-one Carbon Fibre Pole (optional)**
Digital DRX transceiver / multibeam transducer / wireless transmitter / GPS, heading & motion sensors integrated into an ultra-lightweight casing (approx. 18kg)
- ▶ **Wideband fully digital** 136 - 184kHz transducer technology
- ▶ **Wireless Capability** between a mothership & tender vessel (real-time data)
- ▶ **Choose your own functions** with new licensing options
- ▶ **Cost-effective solution** for multiple applications
- ▶ **Easy to install/commission**
- ▶ **Turnkey solution offered** with position/heading and motion sensors
- ▶ **CDX** – Simplified user interface
- ▶ **TimeZero compatible** with optional licence

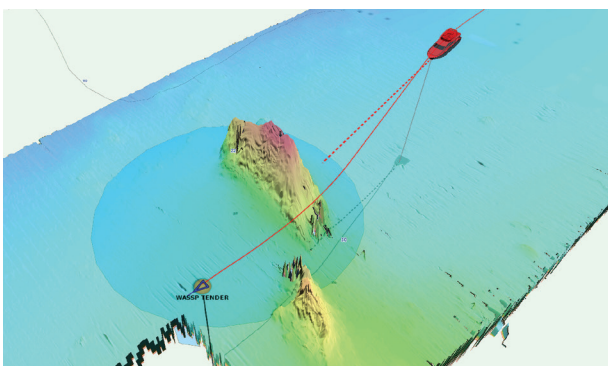


Toughpad (optional)

Carbon Fibre Pole (optional)

INTEGRATION WITH TIMEZERO

The **W3** can be integrated with TimeZero Professional software (via an optional module add-on).



CUSTOMISABLE

The **W3** is the latest addition to the WASSP generation 3 product range. Using the WASSP DRX and 160kHz transducer, the **W3** is a customisable solution offering multiple options tailored for each project.



W3

SPECIFICATIONS

EQUIPMENT DETAILS

MODEL	W3
FREQUENCY	160kHz (WideBand Variable)
TRANSCIVER TYPE	DRX
TRANSDUCERS SUPPORTED	WMB-160
IMU SUPPORTED	Internal (Carbon Fibre Pole)
DEPTH* (NOMINAL)	200m
EFFECTIVE BEAMWIDTH (ATHWARTSHIPS X FORE-AFT)	120° x 4°
BEAM WIDTH PS (DEG)	4.4
BEAM WIDTH FA (DEG)	3.2
BEAM SPACING (NOMINAL)	0.54° over 120° (224 Beams)
MAX VERTICAL RESOLUTION (CM)	2
SENSORS CONNECTIVITY	DRX
PSU	9-32VDC (30W)
BOTTOM DETECTIONS	Amplitude & Phase
INTERFACE	RS232/422/NMEA0183/NMEA2000
TIDE CORRECTION	Fully Geo Referenced

FUNCTIONALITY

BATHYMETRY	Yes
SONAR POLAR VIEW	Yes
SOUNDER (QUINT BEAM)	Upgrade Option
BACKSCATTER	Upgrade Option
SIDESCAN	Upgrade Option
RAW DATA	Upgrade Option
WATER COLUMN TARGETS	Upgrade Option
OPEN CLIENT SUPPORT	Upgrade Option
RTK TIDES	Upgrade Option
XYZ DATA FORMAT EXPORT	Upgrade Option
GSF DATA FORMAT EXPORT	Upgrade Option

USER INTERFACE

CDX-VISUALISATION & CONTROL UI	Inc
TIME ZERO PRO**	Option

MINIMUM PC SPECS

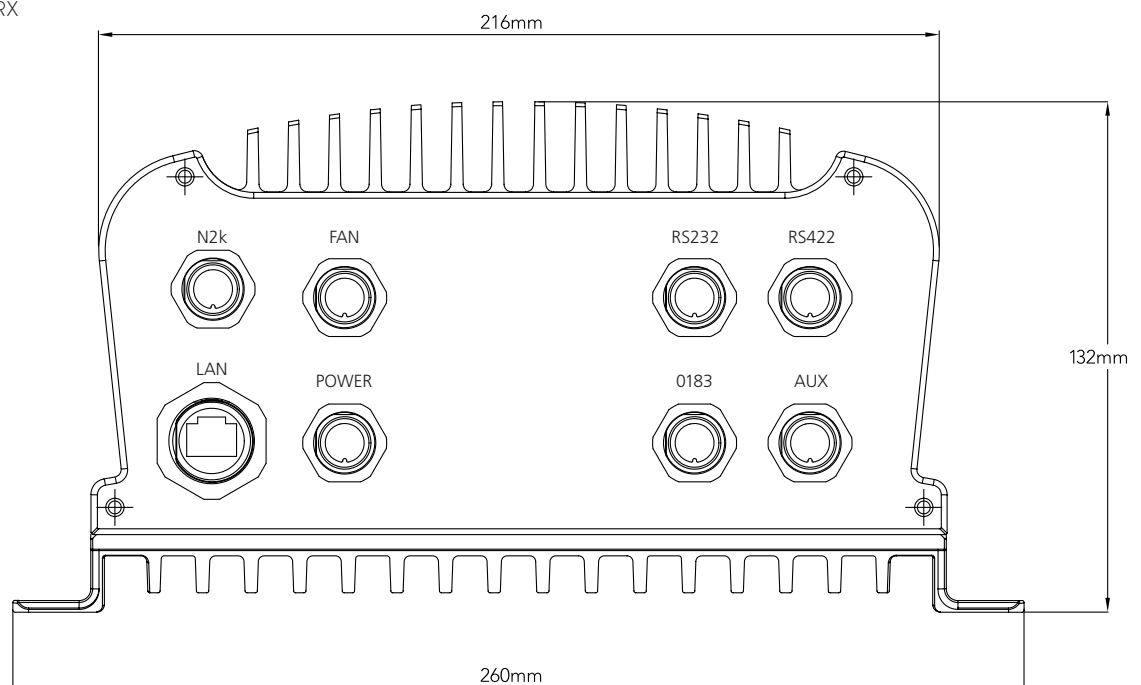
	MINIMUM	RECOMMENDED
OS	Windows 7,8,1,10	Windows 8,1,10
CPU	2Ghz, 2 Cores/4 Threads	2Ghz, 4 Cores/4 Threads
MEMORY	4GB	8GB
GRAPHICS	DirectX11	DirectX11
SCREEN RESOLUTION	1024 x 768	FHD-1920 x 1080
HDD/SDD	250GB	2TB
NETWORK	Ethernet-GbE, WiFi-802.11ac	Ethernet-GbE, WiFi-802.11ac
DUAL SCREEN SUPPORT	Yes	Yes

EQUIPMENT DIMENSIONS

For hull mount option:

	DRX	TRANSDUCER 160
DIMENSIONS (LxWxH, MM)	377 x 260 x132	328 x 163 x 94
WEIGHT	8.3kg	15kg(cable dependent)

Image shows DRX Hardware. For more information and dimensional drawings please refer to the DRX installation manual.



WASSP requires (3rd party) position, heading, roll, pitch and heave data for electronic beam compensation/stabilization (not included - local supply). See your local WASSP expert for more information/clarification. Specifications subject to possible change without notice.

*Depth capability subject to a variety of external factors.

**Requires WASSP Interface Module & Excludes 3rd Party Software (contact your local supplier for software component pricing).

For more info or to find a dealer near you: W: WASSP.COM P: (+64) 9 373 5595 E: sales@wassp.com FB: facebook.com/wasspmultibeam

wassp[®]
MULTIBEAM
SEE IT ALL

WASSP: ALWAYS GOING BEYOND

WASSP is part of the ENL Group, world leaders in marine sounder, radar and communications for more than 72 years. Based in the marine nation of New Zealand, which is in one of the world's largest marine economic zones, ENL continues to achieve and push boundaries in what is a challenging and dynamic industry.

We make software and hardware solutions for organisations working in surveying and mapping, defence, commercial fishing and workboats.

Our passion and commitment to real innovation is what sets us apart. We consistently bring to market game-changing technology and cost effective products with simple operation.

Worldwide support

WASSP is sold and supported by a global network of authorised distributors.

We offer comprehensive technical and user training and can direct technical support worldwide if required.

We pride ourselves on world class product support.

For more info or to find a dealer near you:

Visit **WASSP.COM**

☎ **(+64) 9 373 5595**

✉ **sales@wassp.com**

📘 **facebook.com/wasspmultibeam**



46 Hillside Road, Wairau Valley, Auckland, New Zealand

☎ **(+64) 9 373 5595**

✉ **enquiries@enl.co.nz**