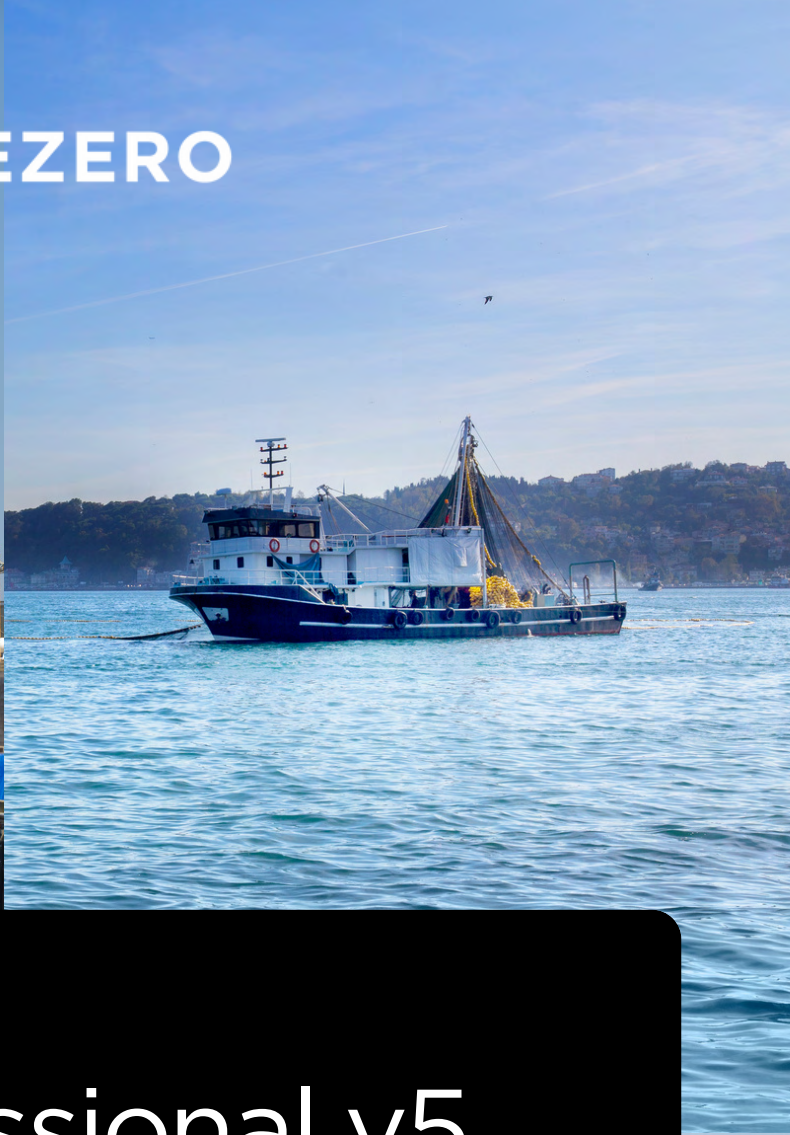


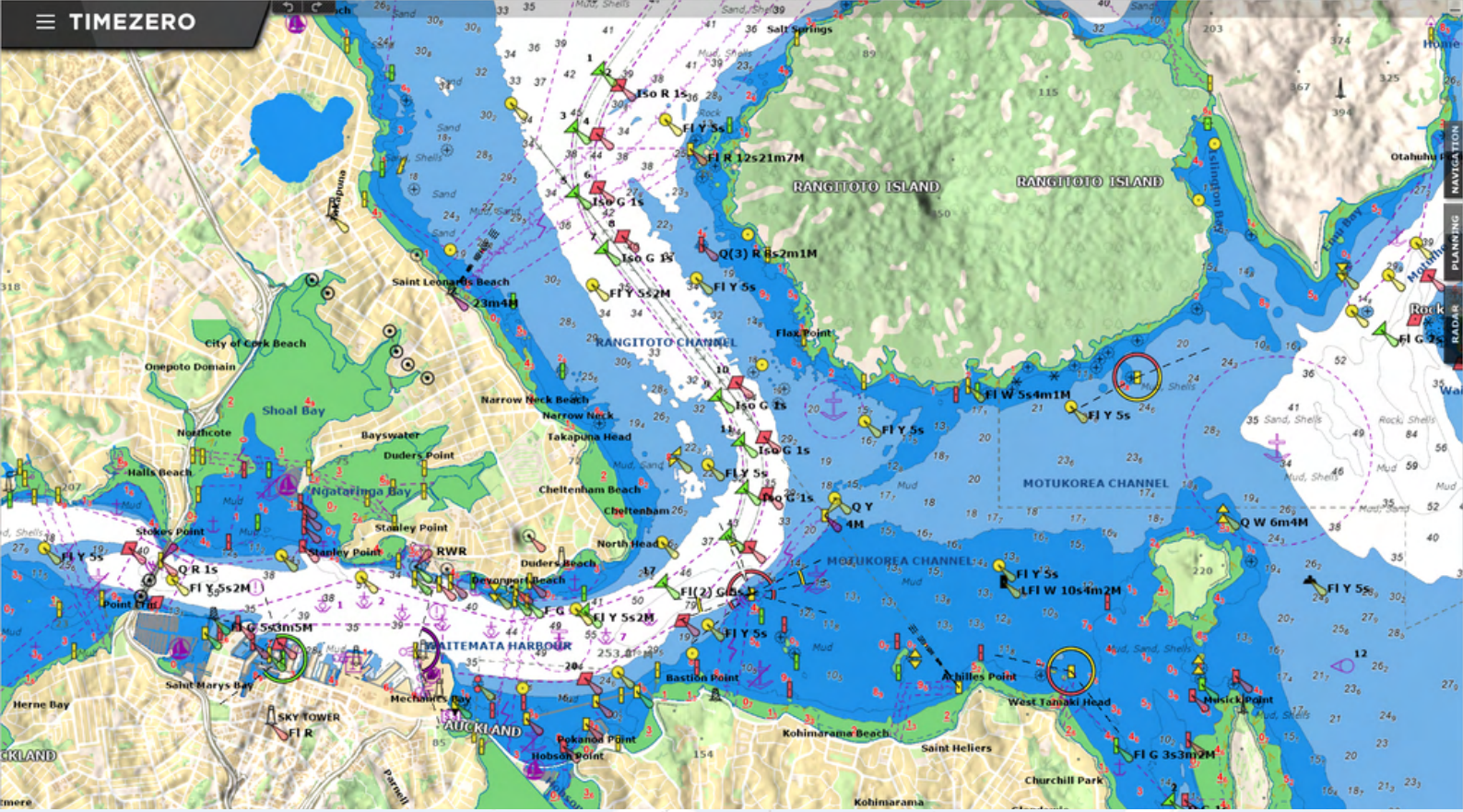


TIMEZERO



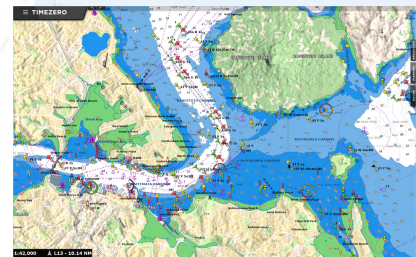
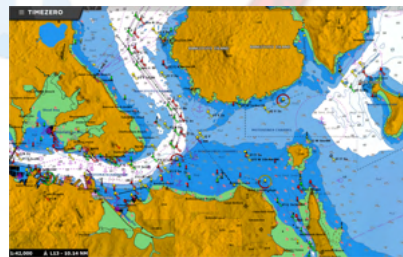
TZ Professional v5





TZ Professional is always getting better. With new features rolling out regularly, TZ Professional is the premier choice for all Professional Mariners. Here are some of the latest updates.

COMPATIBILITY WITH OUR REVOLUTIONARY TZ MAPS



TZ Professional is now compatible with our new TZ MAPS.

TZ MAPS is a revolutionary development in the world of maritime cartography, unlike anything seen before!

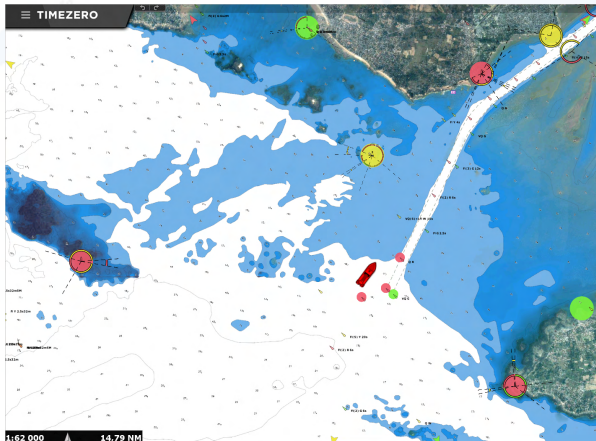
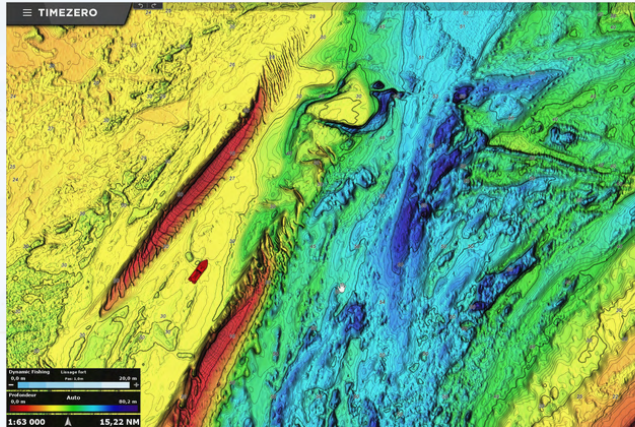
A new ultra-complete and extremely innovative product that includes both Vector and Raster formats as standard.



NEW FEATURES TZ MAPS

BATHYVISION

TZ MAPS offers the best bottom data available and BathyVision lets you display it dynamically and intuitively in color and/or with contour lines. You can configure the density of contour lines and associated shading to focus very precisely on high-potential fishing areas.

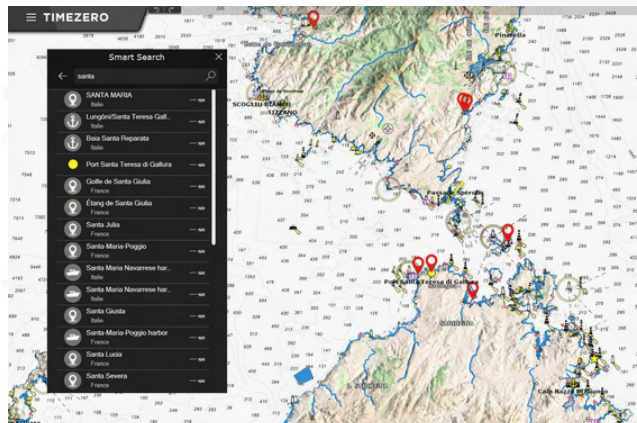


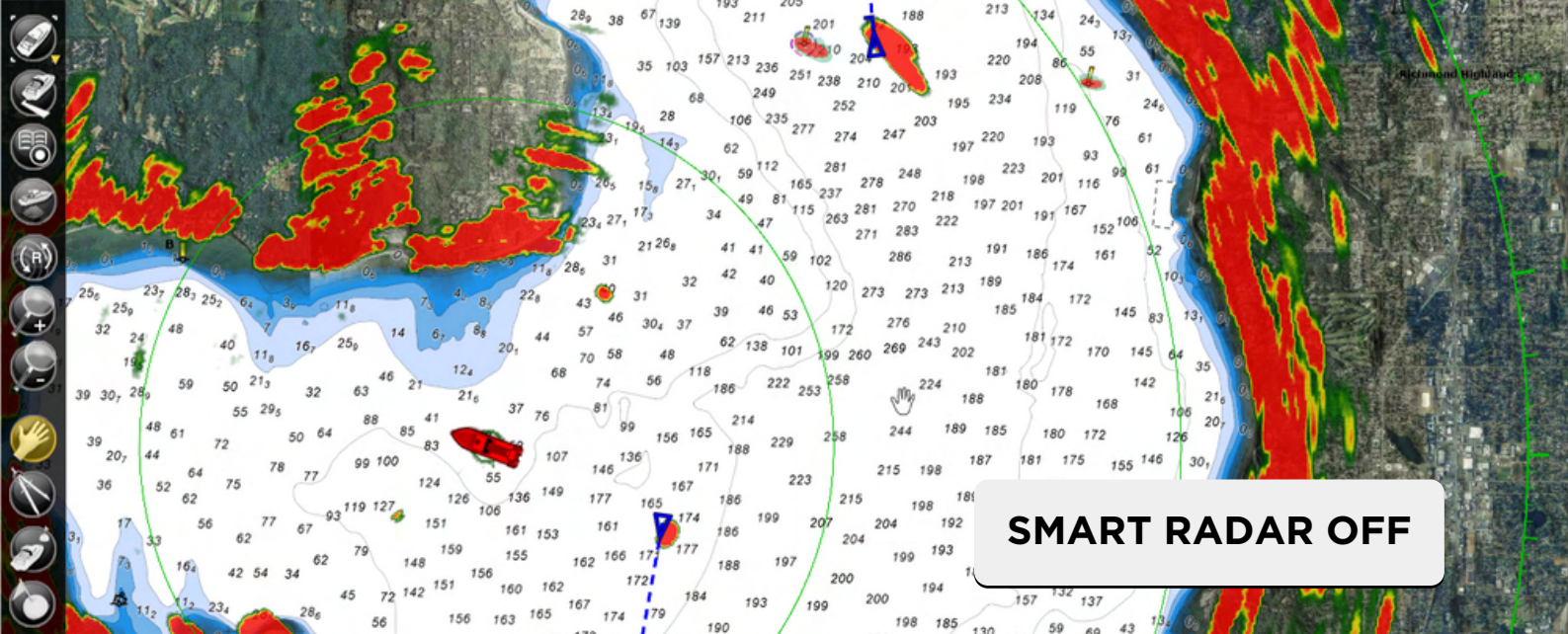
DYNAMIC LIGHTS

This function intuitively represents the light sectors according to your boat's position and field of vision. It can also flash the navigation lights on the chart according to your position. Only lights within your actual field of vision are shown as highlighted and flashing.

SMART SEARCH

A high-performance search engine is integrated into all our products to enable users to search for any information present on our charts (tide stations, rocks, buoys, etc.) as well as in your user object database (marks, roads...).

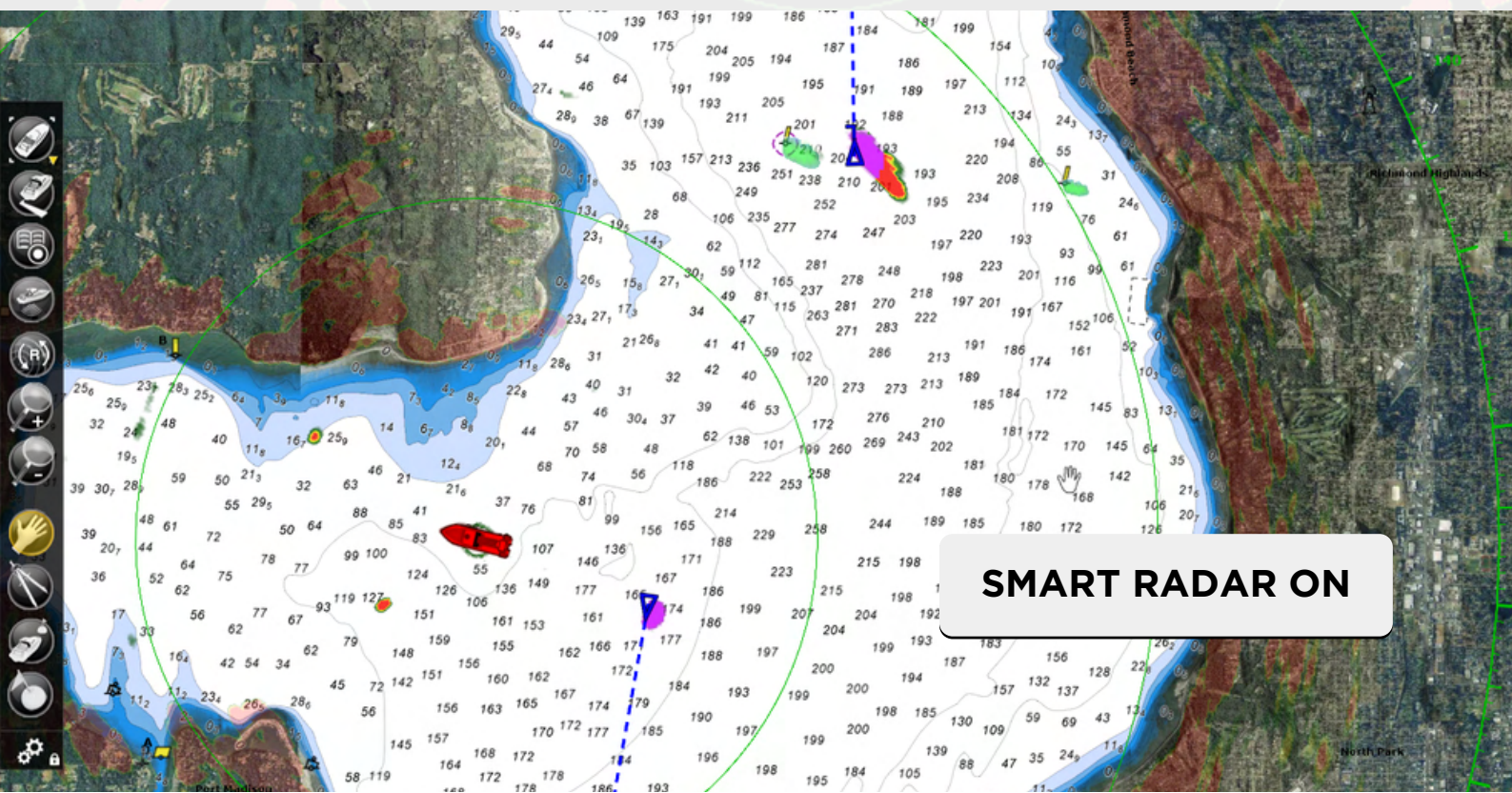




SMART RADAR

The Smart Radar mode uses vector chart information and AIS/ARPA targets to discriminate radar echoes, allowing you to focus on "unknown objects" to improve situational awareness.

To clearly identify echoes from buoys or AIS targets, it is possible to customize the associated radar color.



Trips

Distance **17.7 NM** | Time **4h17'** | Speed **4.1 kn**

Saturday, August 21, 2021
Périple Solo 2021

Distance **60.3 NM** | Time **10h33'** | Speed **5.7 kn**

Friday, August 20, 2021
Périple Solo 2021

Distance **40.4 NM** | Time **8h58'** | Speed **4.5 kn**

Thursday, August 19, 2021
Périple Solo 2021

Dynamic Fishing Medium Smoothing
0.0 ft Steps: 50ft, 100ft, 250ft, 500ft 300 ft

1:340,000 81.94 NM

TRIPS

The Trip function records all your data (such as position, speed, depth, wind...) and combines them with any photos, catches, or events you may have created during your navigation.

Your trips will be displayed directly on the chart and can also be viewed from a list where statistics (duration, distance, average speed, speed graph) will be displayed together with your photos, events, and catches.

When a Trip is selected, you can replay it on the chart using the Time Bar located at the bottom of the screen.

TIMEZERO

Trips

Distance **17.7 NM** | Time **4h17'** | Speed **4.1 kn**

Saturday, August 21, 2021
Périple Solo 2021

Distance **60.3 NM** | Time **10h33'** | Speed **5.7 kn**

Friday, August 20, 2021
Périple Solo 2021

Distance **40.4 NM** | Time **8h58'** | Speed **4.5 kn**

Thursday, August 19, 2021
Périple Solo 2021

TIMEZERO

Trips

Trip Details

Call to Action: 8:53 AM 7:27 PM

Speed Graph

Sunset & Sunrise

Sunrise: 6:38 AM
Sunset: 8:12 PM

Trip Log

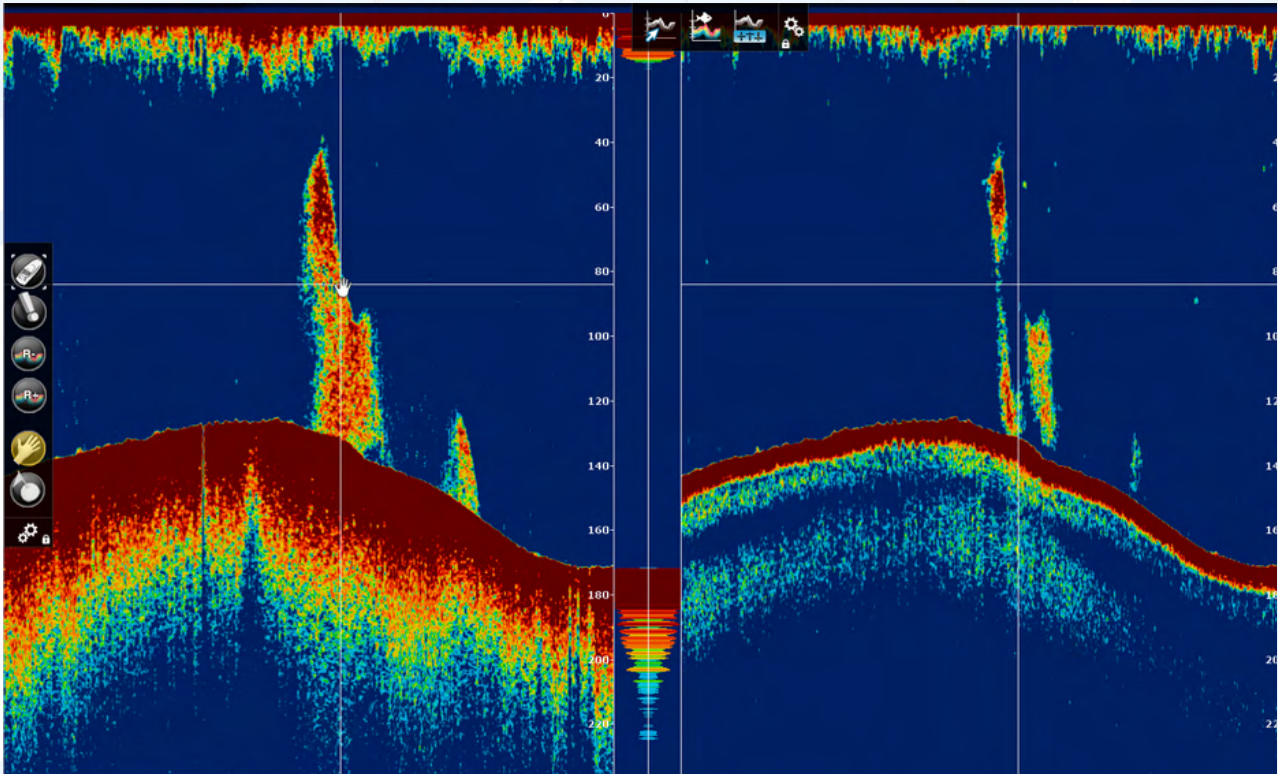
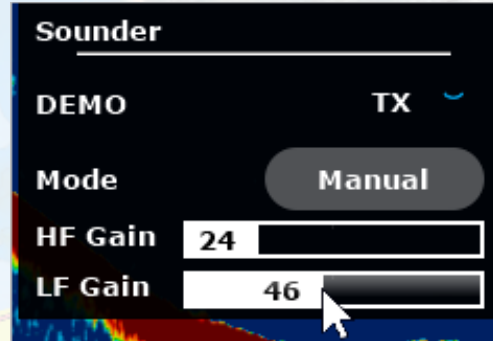
Time Interval	500m	1500m	3000m	1500m	500m
8:53	85.1	42.7	246.1	283.7	2.1
9:00	2.9	66.3	76.1	526.9	3.8
9:30	6.8	19.4	19.4	514.2	8.5
10:00	6.8	222.7	229.7	111.3	18.9
10:30	6.1	279.7	289.1	11.4	9.1
11:00	6.5	307.1	305.7	14.3	7.4
11:30	6.0	329.8	331.2	51.4	13.9
12:00	7.2	301.4	304.3	536.9	8.4
1:00	6.1	297.2	308.5	565.2	7.3
1:30	3.1	233.0	207.4	536.0	4.9

SOUNDER CONTROL NAVDATA

A new "Sounder Control" NavData can now be added from the NavData sidebar.

The Sounder Control NavData gives access to Sounder Control functions:

- Standby/Transmit switch.
- Button mode: to switch between Manual, Fishing or Cruising mode.
- HF/LF Gain control (Only for Manual mode).



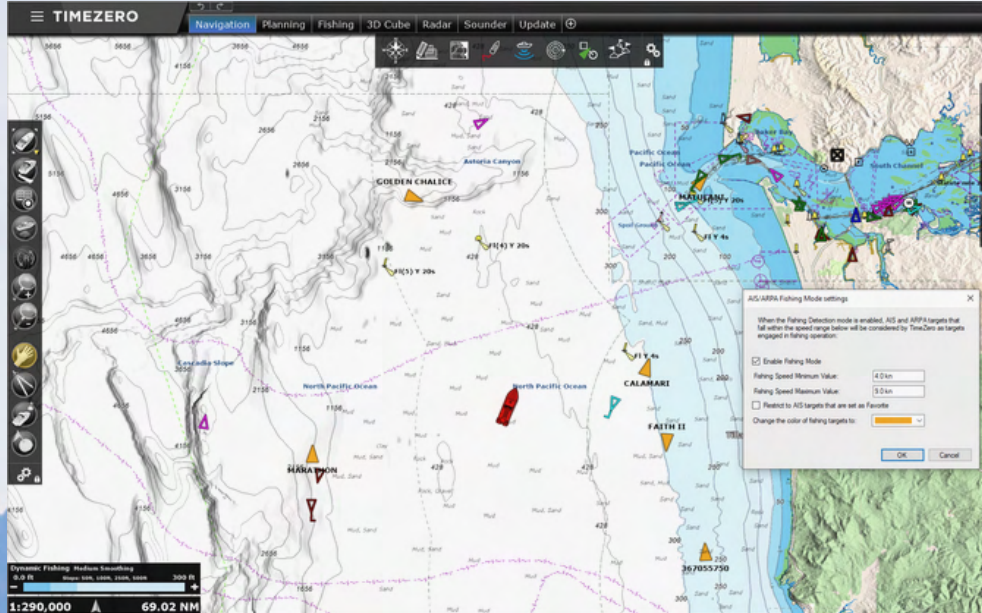
In addition to this new NavData, TZ Professional v5 is now compatible with the Furuno Sounder DFF3-UHD.



New*

FISHING MODE

For AIS and ARPA based on a speed range.



It is now possible to quickly identify boats which are actively fishing by selecting specific speed ranges. Thus, only fishing boats will be displayed on the screen, or they will be presented with a specific color.



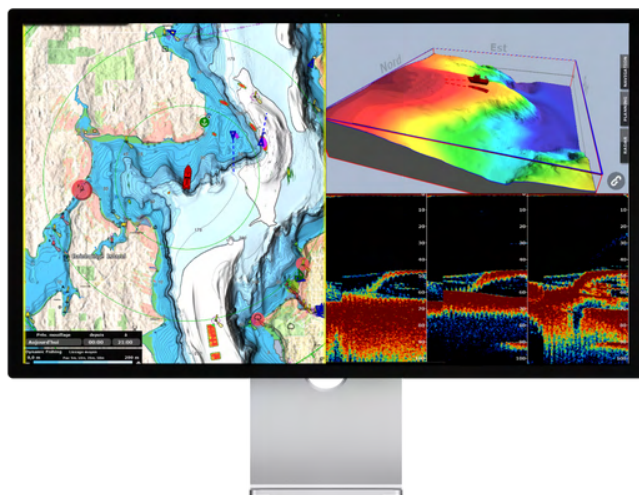
THE CUTTING EDGE SOFTWARE FOR PROFESSIONAL NAVIGATION

**On top of these new features
TZ Professional covers all the needs
of Professional Mariners thanks to its
award-winning features:**

- ✓ Advanced Route management.
- ✓ S57/S63 Charts compatibility.
- ✓ Personal Bathymetric Generator (PBG).
- ✓ Furuno Radar integration.
- ✓ Furuno Sounder integration.
- ✓ Camera integration.
- ✓ Weather and Oceanographic Forecasts.
- ✓ Multibeam Sounder integration.
- ✓ Voyage Data Recorder module.
- ✓ Bottom Hardness compatibility.
- ✓ Trawl Positioning module.

If you can envision it, you can make it happen with TZ Professional v5, the world's best marine navigation software.

Tens of thousands of Professional Mariners around the world use TZ Professional to make their daily operations smarter and safer. Getting started is fast and easy.



© Nobeltec, Inc.
© MaxSea International

www.mytimezero.com

Europe : +33 5 59 43 81 00
US : +1 503 579 1414

A fleet of fishing boats is seen on a choppy sea under a cloudy sky. The boats are white with blue accents and are equipped with fishing gear. The water is dark and turbulent, with white foam from the waves. The sky is overcast with grey clouds. In the foreground, a dark, rocky shore is visible with white foam from the waves crashing against it.

 **PROFESSIONAL**