

F3X FISHING APPLICATIONS



OFFSHORE



COASTAL



SPORTFISHING

“I successfully installed the WASSP F3 utilising Key Pulse and IMS on the first vessel that had several sounders and sonars, both Furuno and other brands, and small transducer tanks. For the second vessel, we were able to install the F3X. From the moment we turned it on, it worked without interference, and the performance is incredible – a major benefit for an Installer and Operator.”

– Matias Johansson, Furuno Service Engineer, Sweden

OUTFIT YOUR FLEET WITH WASSP F3X NOW!

To add WASSP F-Series technology to your fishing operations, contact your local dealer or email sales@wassp.com



SEE IT ALL

ALWAYS GOING BEYOND

WASSP is part of the ENL Group. With more than 74 years' experience, we're world leaders in marine sounder, radar and communications.

Based in the marine nation of New Zealand, which has one of the world's largest marine economic zones, ENL invests heavily in R&D to constantly push the boundaries. We develop software and hardware solutions for seabed surveying and mapping, defence, superyachts, commercial fishing and workboats.

Our passion and commitment to real innovation is what sets us apart. We consistently bring game-changing technology to market, with cost-effective products that are easy to operate to make your life at sea easier.



SEE IT ALL

UK OFFICE

6A, Kings Head Centre, 38 High St.
Maldon, Essex, CM9 5PN, UK
+44 1621 983 125

AUCKLAND HEAD OFFICE

46 Hillside Rd, Wairau Valley
Auckland, New Zealand
+64 9 373 5595

AUCKLAND SHOWROOM

23 Westhaven Drive
Auckland, New Zealand
+64 9 980 0291

NELSON OFFICE/SHOWROOM

78 Vickerman St, Port Nelson
Nelson, New Zealand
+64 3 548 4987

SALES@WASSP.COM | WASSP.COM



A FURUNO COMPANY

TAKE YOUR FISHING
TO THE NEXT LEVEL
WITH THE WASSP F3X

FIND IT ALL

CATCH THE MOST PROFITABLE FISH IN LESS TIME USING LESS FUEL

The WASSP F3X Multibeam Sounders are a revolution for commercial fishing. With WASSP's 120-degree swath, you'll find more fish, more quickly, over a much wider area than with traditional single-beam systems. Even if you're fishing for mid-level schooling fish, the seafloor is the beginning of the food chain. Understanding the seafloor is critical to fishing in all depths of water. The WASSP F3X is purpose-designed for all fishing operations. They take commercial fishing to the next level for:

- Coastal fishing
- Offshore fishing
- Trawling
- Purse seining
- Pot fishing
- Shellfish dredging
- Longlining
- Fish farms

SUCCESSFULLY EXPLORE NEW FISHING GROUNDS

Now you can confidently explore new fishing grounds much faster and with greater accuracy. This is especially useful if regulations around fishing grounds change or environmental factors such as weather patterns, storms or current flows affect your usual fishing grounds.

10 GREAT BENEFITS OF A WASSP F-SERIES FISHING SYSTEM

1. Map fish schools faster
2. Save fuel due to less time steaming
3. Successfully explore new fishing grounds
4. Break in new grounds faster and more accurately because you can see what's there
5. Target or avoid hidden underlying rock with bottom hardness information
6. See obstacles and haul in your gear before you foul up, avoiding costly damage
7. Target new grounds you previously thought unfishable
8. Target the school for best efficiency
9. Increase your catch-rate
10. Enjoy faster turnaround and less time spent at sea

NEW EASY-TO-USE INTERFACE

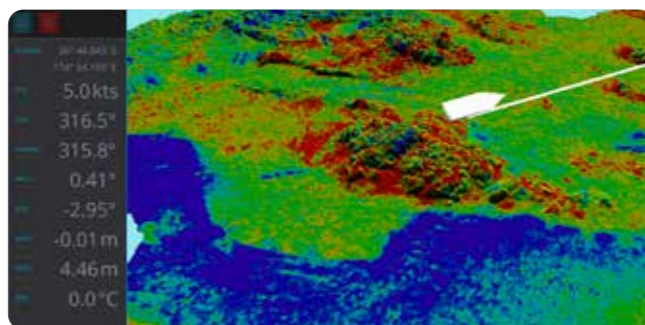
The WASSP F-Series introduces a new simplified WASSP CDX for control, visualisation and data management, while still providing a comprehensive set of functions to meet your most challenging requirements.

Integrates with leading software

WASSP systems have been designed to seamlessly integrate with leading software suites such as MaxSea TimeZero Pro and OLEX as well as hydrographic software suites like HYPACK, BeamworX, EIVA, Echoview and QINSY.

WASSP IS SUPPORTED IN MORE THAN 30 COUNTRIES

Since the first installation in 2000, WASSP has seen incredible growth in all areas. WASSP is now distributed in more than 30 countries and has been embraced by the commercial fishing, recreational fishing, superyacht, hydrographic, professional workboat, navy and coastguard sectors.



ABOUT THE WASSP F3X



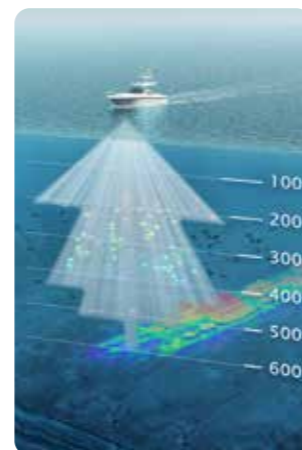
DRX-46

The F3X is a quantum leap forward in multibeam sounder technology. Incremental and detailed improvements to the core function of WASSP technology elevates the F3X to a new standard of performance for the fishing industry.

With significant advances by WASSP engineers, and with a new high-power digital transceiver, the F3X delivers 12 times the power of the F3, giving you a maximum depth of 600m. You get better target detection, deeper depth and greater screen clarity, generated by more energy and better processing than ever before.

F3X FEATURES AND BENEFITS

- Higher power DRX-46 processor with a high frequency transducer WMB-160, giving you a maximum depth of 600m.
- Long pulse time that equates to more energy in the water means more clarity in shallow and medium depths of 50 to 500m.
- Key Pulse, Advanced Key Pulse (AKP) and Interference Management System provides clean windows for transmission without interference.
- Ready for install on complex vessels with several other existing sounders and sonars.

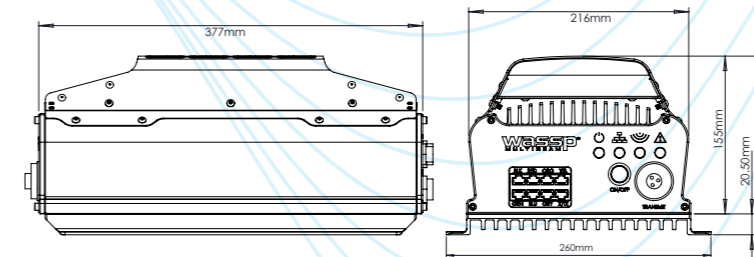


F3X Multibeam Depth Performance:
Model: F3X (160Khz)
Max: 600M
Swath 30°: 525M
Swath 60°: 400M

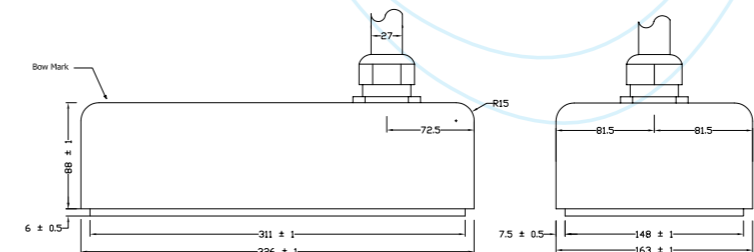
HIGHLY SENSITIVE WASSP TRANSDUCERS

With the highly sensitive WASSP Wideband Fairing Transducer – 160 and WMB-160 transducers, you get much more depth than similar powered traditional sounders. With processing from very low comparable transmission power WASSP transducers give you very good clarity in both deep and shallow water.

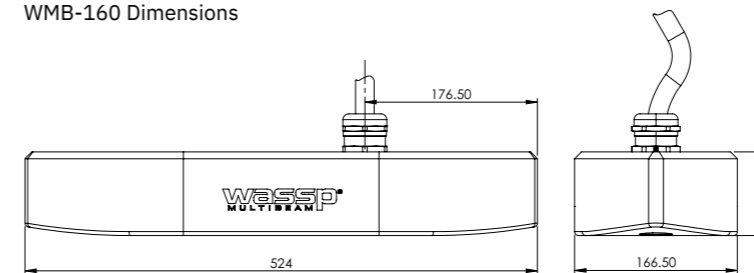
DIMENSIONS:



DRX-46 Dimensions



WMB-160 Dimensions



Wideband Fairing Transducer – 160 Dimensions

FULL SPECIFICATIONS	F3X
Transceiver type	DRX-46
Current transducer support	WMB-160 / Wideband Fairing Transducer – 160
Minimum depth/m	1m
Typical depth1/m (90° or 2:1)	450m
Max depth2/m (60° or 1:1)	525m
Sounder depth3/m (nadir)	600m
Swath width /deg	120°
Signal type	FM/CW
Default frequency	160kHz
Centre frequency from	100-160kHz
Maximum CHIRP frequency range	+/-30kHz
Frequency from	90-190kHz
Range resolution (max)	2cm
Beam width port/starboard	4°
Beam width fore/aft	3.2°
Sounder beams	5
DC input	18-32V
Transducer cable length options	5m, 10m or 20m
Transducer IP66 connectors	Optional
Carbon fibre transducer and sensor mount pole	Optional
Wireless antenna kit	Optional
Operating power consumption (average)	70W
Data connection	GbE
Operating temperature	0° to 40°
Ingress/water impact	IP53 bulkhead-mounted
Environmental standards	IEC60945, MIL-STD-901
DRX mounted in Pelican case with IP66 connectors	Optional

Please see product manual for full technical specifications

WMB-160 TRANSDUCER

Like many commercial fishing transducers, the WMB-160 is designed to be mounted in a sea chest. This gives you the flexibility to have a custom-made sea chest for your specific vessel.

While all transducers need as much separation from other sounders as possible and clean waterflow across the surface, the F3X with AKP and IMS allows a well-placed WASSP transducer to operate in a sea chest with other transducers.

WIDEBAND FAIRING TRANSDUCER – 160

The Wideband Fairing Transducer – 160 has a variable centre frequency and CHIRP bandwidth. It can be mounted externally to the hull with or without a fairing block (no custom-built box is needed). It can be used on many hull materials and is ideal for plastic hulls.

Sea temperature measurement is included. There is the option for a motion sensor to be included inside the Transducer, which means fewer cable runs and an easier install. With its bolt-on design and drag-resistant shape, it's the perfect solution for the end-user. Pole mounting is supplied for side and stern mounting (WASSP Pole mounts will soon be available).



WMB-160 TRANSDUCER

WIDEBAND FAIRING TRANSDUCER – 160

PC	RECOMMENDED
OS	Windows 8.1,10
CPU	2Ghz, 4 Cores/4 Threads
Memory	8GB
Graphics	DirectX11
Screen resolution	FHD-1920 x 1080
HDD/SSD	2TB
Network	Ethernet-GbE, WiFi-802.11ac
Dual screen support	Yes
FEATURES	F3X
INCLUDED	Bathy - 2D/3D
	Sonar
	Sounder - Quintbeam
	PPS
	Key pulse
	CDX or TZ interface
	Interference Management System and Advance Key Pulse
LICENCED	CDX or TZ interface
(indicative list only)	Olex interface
	GD-700 interface
	Backscatter
	Sidescan
	Water column targets
	RTK Tides
	Survey
	XYZ, GSF or Echopilot Data Export
	Wireless Licence