

Displays for all Maritime Markets

SERIES X

Naval
Yacht
Commercial



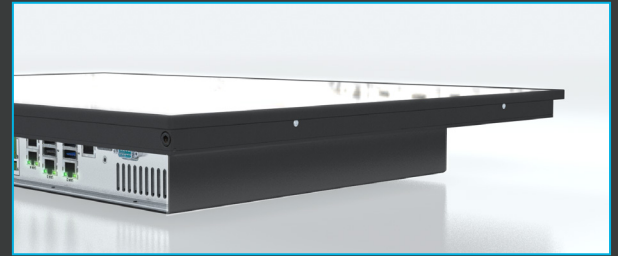
**HATTELAND
TECHNOLOGY**
an EMBRON Company 

SERIES X Displays

SLEEK-BY-DESIGN

Our commitment to develop specialized products for a multitude of onboard ship systems continues, with the SERIES X range of displays. With cast aluminum compact and sleek-by-design chassis, these units can be desk or console mounted - keeping our long-term commitment to Form, Fit and Function.

SERIES X displays are all fully type-approved, having undergone and passed our extensive test program, which includes HALT testing. This means that the products are tested well outside the requirements of EN60945 and E10. The result is a more reliable product.



GLASS DISPLAY CONTROL™

KEY FEATURES - Series X Generation 2 (G2)

Sizes:

8", 12", 13.3", 15", 17", 19", 23.8", 24", 26", 27", 32", 43" and 55"

LED Backlight - Runs Cool and Efficiently

Daylight Viewable with Superior Optical Bonding

Sunlight Viewable / High-Bright Versions Available

Full Dimming - Adjustable Brightness from 0-100%

GLASS DISPLAY CONTROL™ Interface

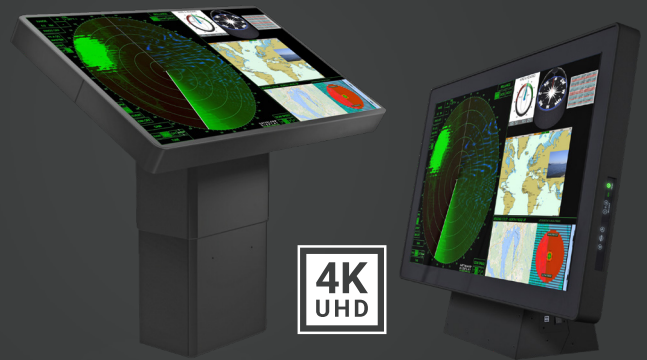
AC/24VDC Multi-Power with most sizes

Waterproof Front / Resistant Back. (IP66 / IP22)

Type Approved (IEC 60945, EU-RO-MR) / ECDIS Compliant

Wide Range of Operating & Storage Temperature, Humidity

Multi-Touch Option



55" Chart / Tactical Table

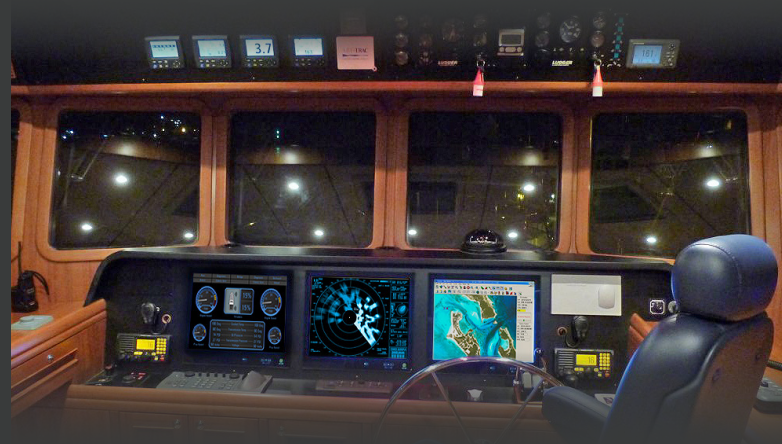
55" Floor Tilt Model

Available as Display/Wall/Console models (where applicable)



32" Display

43" Display



Additional Options



HIGH-BRIGHT

SERIES X Displays are also available in High-Bright versions. These High-Bright Displays are enhanced to be clearly visible in direct-sun-light conditions, while maintaining the same form-factor as standard brightness displays.

This is ideal for installations that require matching displays on the pilothouse and the fly-bridge. High-Bright displays can also be combined with our Multi-Touch technology.

High-Bright displays are available in the following sizes: 15", 17", 19" & 24".



MULTI-TOUCH

Multi-touch is defined as the ability to recognize two simultaneous touch points. Using projected capacitive technology lets us create a more intuitive form of human-device interaction. Touch-interface gestures, supported by projected capacitive sensors, can simplify the interface and provide an intuitive user experience that goes beyond the typical "button replacement" found in most simple touch interfaces.

Moving the active sensor area on the backside of the protection glass makes the system very durable and not sensitive to surface damages like dirt, scratches etc.



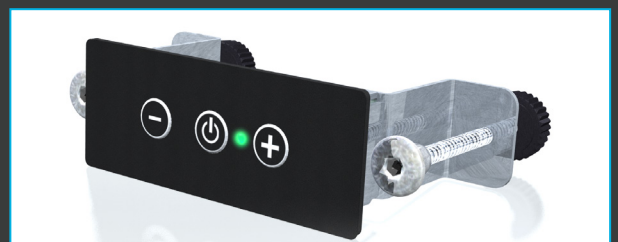
PANEL COMPUTERS - Series X Generation 2 (G2)

All SERIES X display sizes are available with integrated state of the art PC technology (SERIES X Generation 2) suited for a range of processors including Intel® Quad Core i5-6500TE 2.3GHz/3.3GHz, Intel® Quad Core™ i7-7700T, 2.9/3.8GHz or Intel® Dual Core Celeron™ G3900TE, 2.3/2.3GHz. The SERIES X is designed and built for type approved maritime systems instantly transforming them into navigation and automation power-houses. SERIES X panel computers are a single flexible solution, designed only for the marine environment and built to last. Available as: 19, 24, 26 and 27 inch.



REMOTE CONTROL

The remote controller enables the control of SERIES X (12, 15, 17, 19, 23.8, 24, 26, 27, 32, 43 & 55 inch) Displays by providing instant keypad functionality over RS-485/422 serial bus through the well implemented SCOM Protocol by Hatteland Technology.



Specifications



Response Time, Contrast Ratio, Light Intensity and View Angle indicated as (typ) typical values. Datasheet, Technical Drawings and User Manuals available on our website. **High Bright (HB)** and non-High Bright models available as indicated.

	Size & Active Area (HxV)	Resolution, Aspect & Response Time	Contrast Ratio, Light Intensity & View Angle	Signal & Composite Video Connectors	Power Inputs & Consumption (typ/max)	Dimensions (WxHxD) & Compass Safe Distance
8" DISPLAY HD 08T21 STD	8.0 inch 6.83" x 4.11"	800 x 480 WVGA [5:3] 5/11ms (Tr/Tf)	600:1, 600 cd/m ² 70° (U/D), 60° (L/R)	1 x DVI-I IN	2 x 24VDC Galvanic Isolated 20W / 75W	9.29" x 6.54" x 2.01" Standard: 17.72" Steering: 11.81"
12" DISPLAY HD 12T21 STD	12.1 inch 9.68" x 7.26"	1024 x 768 XGA [4:3] 35ms	700:1, 600 cd/m ² 80° (L/R), 70° (U/D)	1 x DVI-D IN 1 x VGA IN	100-240V AC (50/60Hz) + 24VDC 15W / 75W	12.36" x 10.71" x 2.54" Standard: 49.21" Steering: 29.53"
13" DISPLAY HD 13T21 STD	13.3 inch 11.26" x 7.04"	1280 x 800 WXGA [16:10] 6/10ms (Tr/Tf)	800:1, 500 cd/m ² 70° (U/D), 60° (L/R)	1 x DVI-I IN	2 x 24VDC Galvanic Isolated 20W / 75W	13.98" x 9.78" x 2.28" Standard: 17.72" Steering: 11.81"
15" DISPLAY HD 15T22 MMD <i>High Bright (option)</i>	15.0 inch 11.97" x 8.98"	1024 x 768 XGA [4:3] 35ms	1500:1, 400 cd/m ² 1500:1, 1000 cd/m² 85° (L/R/U/D)	2 x DVI-I IN 1 x DisplayPort (DP1.2) IN 1 x VGA OUT 2 x Comp. Video (BNC) IN	100-240V AC (50/60Hz) + 24VDC 75W	14.02" x 12.09" x 2.81" 14.02" x 12.09" x 3.09" Standard: 39.37" Steering: 25.59"
17" DISPLAY HD 17T22 MMD <i>High Bright (option)</i>	17.0 inch 13.30" x 10.64"	1280 x 1024 SXGA [5:4] 5ms 30ms	1000:1, 350 cd/m ² 800:1, 1000 cd/m² 85° (L/R/D), 60° (U)	2 x DVI-I IN 1 x DisplayPort (DP1.2) IN 1 x VGA OUT 2 x Comp. Video (BNC) IN	100-240V AC (50/60Hz) + 24VDC 75W 150W	15.35" x 13.82" x 2.81" 15.35" x 13.82" x 3.09" Standard: 49.21" / 39.37" Steering: 33.46" / 27.56"
19" DISPLAY HD 19T22 MMD <i>High Bright (option)</i>	19.0 inch 14.82" x 11.85"	1280 x 1024 SXGA [5:4] 35ms	1500:1, 350 cd/m ² 85° (L/R/U/D) 2000:1, 1000 cd/m² 89° (L/R/U/D)	2 x DVI-I IN 1 x DisplayPort (DP1.2) IN 1 x VGA OUT 2 x Comp. Video (BNC) IN	100-240V AC (50/60Hz) + 24VDC 75W 156W Max	16.89" x 15.04" x 2.81" 16.89" x 15.04" x 3.09" Standard: 35.43" Steering: 17.72"
24" DISPLAY HD 24T22 MMD <i>High Bright (option)</i>	24.0 inch 20.92" x 11.77"	1920 x 1080 FHD [16:9] 25ms	3000:1, 300 cd/m ² 2300:1, 1000 cd/m² 89° (L/R/U/D)	2 x DVI-I IN 1 x DisplayPort (DP1.2) IN 1 x VGA OUT 2 x Comp. Video (BNC) IN	100-240V AC (50/60Hz) + 24VDC 156W Max 68W Max	23.35" x 15.12" x 2.76" 23.35" x 15.12" x 3.03" Standard: 55.12" Steering: 33.46"
26" DISPLAY HD 26T22 MMD <i>Last Time Buy!</i>	25.54 inch 21.66" x 13.54"	1920 x 1200 WUXGA [16:10] 20ms	1500:1, 350 cd/m ² 88° (L/R/U/D)	2 x DVI-I IN 1 x DisplayPort (DP1.2) IN 1 x VGA OUT 2 x Comp. Video (BNC) IN	100-240V AC (50/60Hz) + 24VDC 231W Max	24.45" x 17.13" x 3.62" Standard: 74.80" Steering: 43.31"
27" DISPLAY HD 27T22 MMD	27.0 inch 23.53" x 13.23"	1920 x 1080 FHD [16:9] 12ms	3000:1, 300 cd/m ² 89° (L/R/U/D)	2 x DVI-I IN 1 x DisplayPort (DP1.2) IN 1 x VGA OUT 2 x Comp. Video (BNC) IN	100-240V AC (50/60Hz) + 24VDC 75W Max	25.59" x 17.20" x 2.74" Standard: 74.80" Steering: 43.31"
32" DISPLAY HD 32T22 MVD	32.0 inch 27.89" x 15.69"	3840 x 2160 UHD [16:9] 12ms (G to G)	1000:1, 350 cd/m ² 89° (L/R/U/D)	2 x HDMI 1.4 IN 1 x HDMI 2.0 IN 1 x DisplayPort (DP1.2) IN	100-240V AC (50/60Hz) + 24VDC 65W / 156W	29.84" x 19.69" x 2.52" Standard: 94.49" Steering: 57.09"
43" DISPLAY HD 43T22 MVD	43.0 inch 37.05" x 20.84"	3840 x 2160 UHD [16:9] 8ms (G to G)	3000:1, 500 cd/m ² 89° (L/R/U/D)	2 x HDMI 1.4 IN 1 x HDMI 2.0 IN 1 x DisplayPort (DP1.2) IN	100-240V AC (50/60Hz) + 24VDC 312W MAX	39.57" x 24.41" x 2.97" Standard: 61.02" Steering: 47.24"
55" DISPLAY HD 55T22 MVD Wall / Console	55.0 inch 47.62" x 26.79"	3840 x 2160 UHD [16:9] 6.5ms (G to G)	4000:1, 450 cd/m ² 89° (L/R/U/D)	2 x HDMI 1.4 IN 1 x HDMI 2.0 IN 1 x DisplayPort (DP1.2) IN	100-240V AC (50/60Hz) + 24VDC 145W / 312W	53.35" x 32.48" x 4.88" 53.02" x 32.19" x 3.90" Standard: 196.85" Steering: 90.55"

Head Office:

Hatteland Technology AS, Eikeskogvegen 52, N-5570 Aksdal, Norway. Tel: +47 4814 2200 / mail@hattelandtechnology.com

Hatteland Technology INC.

450 South Melrose Drive, Suite #107, Vista, CA 92081, USA. Tel: 858-282-0659 / donna@hattelandtechnology.com

Sales Offices:

Hatteland Technology AS, Strandveien 35, N-1366 Lysaker, Norway. Tel: +47 4814 2200 - sales@hattelandtechnology.com

Hatteland Technology SAS, Actimart- 1140, rue Ampère, CS 80544, 13594 Aix-en-Provence, Cedex 3, France. Tel: +33 (0) 6 88 33 64 93 / mehdi.bounoua@hattelandtechnology.com